

## Asian Art, Thu, 4 November 2021 9:30

- 1 Chinese school, early 20th century, Taoist celestial beings, amongst rocks, waves and clouds, watercolour & gouache on silk, 77cm x 37.5cm **£200-300**



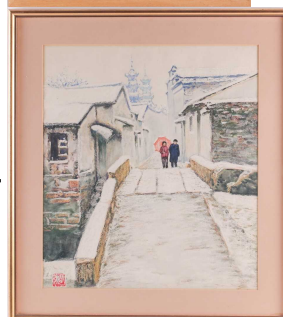
- 2 A Chinese gouache painting on silk of Bodhisattva Mahasthamaprapta, Ming dynasty, seated in Dhyana mudra, in long flowing blue robes, raised on a platform, surrounded by clouds, heightened with gilding throughout, 36.5cm x 22cm **£600-800**



- 3 Chinese school, late 19th century, bamboo and chrysanthemums, monochrome, watercolour on paper laid onto board, 43cm x 43.5cm **£150-250**



- 4 Yao Min (Chinese, 20th century), a winter scene with a couple crossing a bridge before snow covered rooftops, seal mark, watercolour, 41.5cm x 36.5cm  
A printed label verso reads 'Member of the Suzhou Artists Association, Member of the Suzhou Society for the study of oil painting, Yao Min, 148 Ren Min Road Suzhou Jiangsu...' **£80-120**



- 5 Chinese school, after Liu Chi, 19th century, Swallows above blossoming prunus, signed and with red seal mark, watercolour and gouache on silk, 25.5cm x 24cm **£150-250**



## Asian Art, Thu, 4 November 2021 9:30

- 6 A Chinese export album of twelve pith paper ornithological studies, early 19th century, each mounted loosely on album leaf within printed cell edges, each approximately 19cm x 29cm **£400-600**



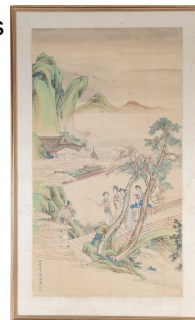
- 7 Tibetan school, 19th century, twelve images of wrathful Buddhist deities, Dharmapala, each inscribed in ink verso, gouache and gilding on paper laid onto card, 7cm x 7.5cm +/- **£400-600**



- 8 A set of six Chinese Taoist immortals, early 20th century, watercolour, each with red seal mark, 19.5cm x 19.5cm; and a mountain retreat view, watercolour on silk, signed and with chop mark, 30cm x 36.5cm **£100-150**



- 9 Chinese school, early 20th century, court ladies and attendants crossing a bridge towards a monk, before buildings and mountains, signed and with two red seal marks, watercolour/gouache on silk, 81cm x 45cm **£400-600**



- 10 Chinese export school, 19th century, a dignitary with attendants and archer, within a walled courtyard, watercolour and gouache, 31cm x 39.5cm **£200-300**





## Asian Art, Thu, 4 November 2021 9:30

- 11 A Chinese silk scroll painting, Qing, 18th century, painted with hunters on and other figures horseback, within a mountainous landscape with figure heading towards a building flyinhg a flag and futher figures heading towards a yurt and tents, beneath a large flock of birds in flight, the upper section with lines of calligraphy, signed lower right with red chop seal marks, image 151cm x 44.5cm **£300-500**



- 12 An early 19th century Chinese export watercolour on pith paper album, the twelve stages of tea production, each sheet approximately 17.5cm x 25.5cm **£300-500**



- 13 Chinese school, Qing, late 19th/early 20th century, a long marriage procession, painted on silk, numerous figures and musicians with banners, halberds, lanterns and gongs, on three separate panels, image 25cm x 272cm **£400-600**



- 14 Six Chinese pith paper pictures, late Qing, 19th/20th century, smallest 10cm x 6.5cm, largest 18cm x 31cm **£100-150**



- 15 Balinese school, early 20th century, two jungle hunting scenes and a further scene of a deity grabbing numerous figures, unsigned, watercolours, 36cm x 24cm, 22cm x 32cm & 22cm x 35cm, **£100-150**



## Asian Art, Thu, 4 November 2021 9:30

- 16 A Chinese painting on silk, 20th century, a black naped Oriole, perched on a fruiting pomegranate branch, a worm in its beak, eight red chop seal marks, 28cm x 33cm, a Ming style painting on silk of a peony, with calligraphy and two seal marks, 19cm dia; and a watercolour of blossoming prunus, 20th century, 70cm x 28cm **£200-300**



- 17 A set of four Chinese watercolours, Qing, painted with birds and blossoming flowers, signed Zhou..., and with chop seal mark, 37 x 49cm & 39.5 x 49cm **£300-400**



- 18 Tony Wong (Hong LKong, 20th century), Junks on a river with mountainous background, signed, oil on canvas (one laid onto board), 45.5cm x 61cm & 45cm x 60cm **£60-80**



- 19 A Chinese family interior scene, Qing, 19th century, a father with child before a bowl of auspicious fruits, a lady preparing items at a table with an assortment of censers, an exotic bird perched upon a tall gnarled staff, before a tall vase stand with censer and vase containing lotus flower, with calligraphy and red seal mark, watercolour and gouache on paper, 101cm x 30cm **£200-300**



- 20 Chinese school, Qing, late 19th century, court ladies and attendants within pagoda and gardens, watercolour & gouache on silk laid onto board, 157cm x 64cm **£400-600**



## Asian Art, Thu, 4 November 2021 9:30

- 21 A Chinese watercolour and gouache on silk, 20th century, painted with three deities in tranquil surroundings, with pine tree, rockwork and stream, 59cm x 86cm **£150-250**



- 22 Chinese school, Qing, 19th century, Guan Yu (Guandi) as Sangharama Bodhisattva, watercolour and gouache on paper, 63cm x 56cm **£400-600**



- 23 Chinese school, late 19th/20th century, a set of five pith paper images of street vendors, each with two red seal marks, watercolour, 37.5cm x 27.5cm **£200-300**



- 24 Five Courts of Hell, a Chinese watercolor on silk, Qing, 19th century, painted with five kings passing judgement aided by ghoulish assistants and grotesque demons, 26.5cm x 111cm **£300-500**



- 25 Chinese school, Qing, early 19th century, two ladies and a young girl in a walled garden, oil on canvas, image 39cm x 29cm **£400-600**



## Asian Art, Thu, 4 November 2021 9:30

- 26 A 19th century Chinese export album of ten pith paper studies of flowers and butterflies, each loosely mounted onto album leaves with silk edges, watercolour and gouache, each approximately 16.5cm x 22.5cm **£200-300**



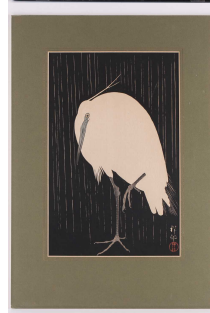
- 27 Chinese school, late Qing, a peasant on a footpath before a dwelling with figure, within a mountainous landscape, signed and with red chop seal, watercolour on silk, image 26.5cm x 28.9cm **£100-150**



- 28 Nakagawa Shurei, Taisho period, standing Cockerel, woodblock print, 36.5cm x 16cm **£100-150**



- 29 Ohara Koson (Japan, 1877 - 1945), White heron standing in the rain, woodblock print, the margin with seal mark, 39cm x 26cm **£100-200**



- 30 Gesso Yoshimoto (1881 - 1936), Bird Flying & Owl Flying under Full Moon, woodblock prints, 33.5cm x 7.5cm **£70-100**





## Asian Art, Thu, 4 November 2021 9:30

- 31 Utagawa Hiroshige (Japanese, 1797 - 1858), 'Evening View of the Eight famous Sites at Kanazawa in Musashi Province', woodblock print, oban, triptych, overall 58cm x 99cm **£100-150**



- 32 Four large Chinese stone rubbings of deities and calligraphy, four modern lithographs and a watercolour of a cricket on an ear of corn watching a fly, all 20th century **£100-150**



- 33 Koho (Jaoanese, 1875 - 1925), Moonlight over Palace & Autumn Landscape, & Teruhide Kato ( Japanese, b.1936), Sakura Dancing, woodblock prints, 33.5cm x 7.5cm & 33.5cm x 13cm **£75-100**



- 34 A Chinese hongmu vase stand, early 20th century, the top inset with white marble, supported on five slender shaped legs with opposing dragons and pearl pierced frieze, united by a lower tier of a flower head with five ruyi heads, 81.5cm high, 31cm diameter **£200-300**



- 35 A Tibetan lacquered and gilt decorated display cabinet, 20th century, of inverted tapering form, decorated with numerous birds and flowers, 83.5cm wide, 109.5cm high, 41cm deep **£100-150**



## Asian Art, Thu, 4 November 2021 9:30

- 36 A Borneo ironwood Spirit House, 19th century, carved in the shape of a ship, the bowsprit and stern respectively carved as the head and tail of a dragon, on tall turned support with metal housing, 277cm high, 160cm wide **£400-600**



- 37 A Chinese hardwood modular room unit, 20th century, with burr wood panels and slide, 106cm wide, 195cm high, 45cm deep **£100-150**



- 38 A Chinese horseshoe back armchair, late Qing, the back panel carved with lotus, with a chamfered rectangular seat, 62cm wide, 93cm high **£200-300**



- 39 A Chinese folding room divider with famille verte panels, 20th century, the shaped panels painted depicting a classic fable, within borders of Buddhist symbols and fish with floral sprays on a stippled green ground, the pierced frame carved with fruiting tendrils and bats to each corner, each panel 197cm high x 47.2cm wide **£12,000-15,000**



- 40 A Korean wedding chest, early 20th century, with four short drawers above two cupboard doors with brass butterfly shaped escutcheon and hinges, on short square feet united by a stretcher, 98cm wide, 85.5cm high, 39.5cm deep **£100-150**



## Asian Art, Thu, 4 November 2021 9:30

- 41 A Japanese tall cabinet, late 19th/early 20th century, with sliding doors with sunken metal handles, 101cm wide, 171cm high, 41.5cm deep **£100-150**



- 42 A Japanese keyaki wood hibachi, late 19th century, with rectangular copper liner, above four short drawers, 80cm wide, 35cm high, 55cm deep **£70-100**



- 43 A pair of Korean hardwood dowry chests, late 19th century, of plain rectangular form with circular iron escutcheons, 71cm wide **£200-300**



- 44 A Thai lacquered and gilt decorated cabinet, early 20th century, with two cupboard doors decorated with numerous chimps amongst blossoming trees above horses and humpbacked cows, within a salmon pink border, above two short drawers, the interior and drawers lined with material, the reverse painted with a standing Buddha and acolytes, 71cm wide, 119cm, 46.5cm **£300-500**



- 45 A Chinese hardwood vase stand, early 20th century, the rectangular top with inset grey/white marble panel, on square legs united by stretchers, 41cm wide, 52.5cm high, 31cm deep **£100-150**



## Asian Art, Thu, 4 November 2021 9:30

- 46 A Tibetan inverted tapering lacquered cabinet, early 20th century, with gilt decoration, the cupboard doors and sides painted with Kylin amongst blossoming trees housing birds and squirrels, with shelved interior, with two short drawers to the base, on square legs, 92.5cm wide, 100cm high, 53cm deep **£150-250**



- 47 A Chinese red lacquer cabinet, Qing, mid 18th century, the two doors joined by a circular escutcheon with long locking pin, enclosing a shelved interior, the upper shelf with two red lacquer drawers, 193cm high, 113cm wide 53cm deep Purchased at the Gordon Reece Gallery, London, January 2002 for £5900 **£500-800**



- 48 A Chinese drum form vase stand, 20th century, with the top with inset veined marble, the frieze with carved bats, 34.4cm high, the top 31cm dia **£200-300**



- 49 A Chinese carved hardwood vase stand, late Qing, the octagonal top with inset rouge marble panel, above a fruiting vine frieze on four leaf carved legs united by a stretcher, the top 25,5cm dia, 66cm high **£120-150**



- 50 A long Chinese scroll table, 20th century, possibly huanghuali, with inlaid brass stringing and everted ends, the frieze with moulded edge and scroll motif, supported on square supports united by turned side stretchers, 203 cm long x 46 cm deep x 105 cm overall height **£5,000-7,000**





## Asian Art, Thu, 4 November 2021 9:30

- 51 A Chinese hardwood scholars hat armchair, 19th century, the shaped back rest with vacant panels, the shaped armrests flanking a woven rattan seat, 54cm wide, 95cm high, **£150-250**



- 52 A Chinese hongmu side cabinet, late Qing Dynasty, with everted scroll top and a trapezoidal base with two frieze drawers above two-panel doors on the simple stile supports. 103 cm long x 46 cm deep x 83 cm overall height. **£200-300**



- 53 A Chinese hongmu drum form vase stand, 20th century, the top inset with a burr wood roundel, the top 30cm dia, 42.5cm high **£200-300**



- 54 A Chinese hongmu tall vase stand, of square section form, the frieze with low relief carved lotus above key fret brackets on square legs united by shaped stretchers, 25.5cm wide, 168cm high **£200-300**



- 55 A Chinese hardwood (Huali?) table, early 20th century, of square form, with woven rattan top, on square legs united by shaped stretchers, 41.7cm wide, 51.7cm high **£200-300**

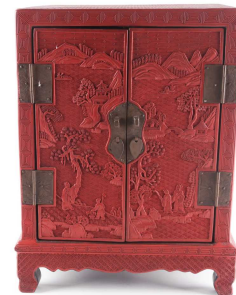


## Asian Art, Thu, 4 November 2021 9:30

- 56 A Chinese cloisonne plaque, late Ming dynasty, the cloisonne depicting a kylin surrounded by auspicious fruits and flowers, inset into a later carved blackwood frame forming the top of a pedestal table, carved with dragons amongst clouds, above the stem carved a large bat amongst clouds above Shoulao holding a lingzhi beside a deer, on three scaley dragon feet, the cloisonne 38cm dia, overall 62cm dia, 87.5cm high **£2,000-3,000**



- 57 A Chinese cinnabar lacquer table cabinet, 19th century, with two doors carved with figures in a lake landscape, opening to reveal two short above one long drawer with black lacquer linings, and lozenge decoration throughout, with ogee shaped aprons and bracket feet, 41cm high, 32cm wide  
Purchased at Tong-in, Seoul, October 1994. **£500-700**



- 58 A Chinese altar type console table, late 20th century, with rounded ends and channel moulded supports, 130cm wide, 80cm high, 35cm deep **£100-150**



- 59 A pair of Chinese hardwood screen panels, each base inset with matching carved lotus flower panels, 177.5cm x 53cm **£50-80**



- 60 A Chinese hongmu framed mirror, late Qing, the bevelled glass within a relief carved lotus flower and scroll frame, with foliate capped finials, 95.5cm x 68cm **£150-250**



## Asian Art, Thu, 4 November 2021 9:30

- 61 A Chinese huanghuali half table, Ming/ early Qing Dynasty. with moulded top over an open frieze with spindle decoration. On moulded square supports terminating in barbed scroll feet. 96 cm long x 51 cm deep x 90 cm overall height. **£8,000-12,000**



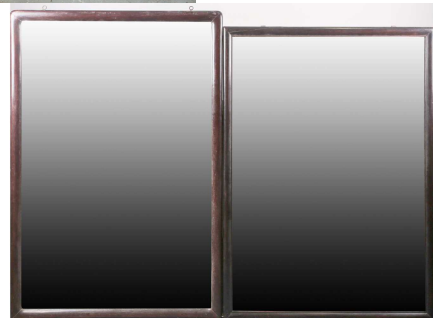
- 62 A large Chinese six panel room divider, 20th century, painted with shaped panels enclosing figures in buildings and gardens, within a floral and leiwen ground, bordered by dragons chasing flaming pearls through clouds, the reverse with roundels of auspicious flowers, each panel 50cm wide & 213cm high **£200-300**



- 63 A Chinese hardwood cabinet, late Qing, with four Chaozhou style gilt and carved wood panels set in two small drawers, above two cupboard doors decorated with incised pheasants perched in peach and pomegranate trees, above a further two short drawers, the square feet with carved brackets, 103cm side, 178cm high, 50cm deep **£200-300**



- 64 Two large Chinese mirrors in Hongmu frames, late Qing, 108cm x 77cm & 113cm x 77cm **£100-150**



- 65 A large Thai wood bench, early 20th century, with traces of lacquer, 168cm wide, 50cm high, 43.5cm deep **£150-250**



## Asian Art, Thu, 4 November 2021 9:30

- 66 A Chinese Shoushan seal, Qing, of square form surmounted by a recumbent Qilin, signed, 3.9cm high, 3.5cm wide **£400-600**



- 67 A Japanese ivory and shibayama page turner, Meiji period, each side inlaid with blossoming flowers and insects, 37cm **£100-150**



- 68 A collection of Chinese carved hardwood mostly circular vase and urn stands of various design, 19th century and later, with carved and pierced decoration. 37 cm diameter the largest. **£150-200**



- 69 A Chinese russet jade fish pendant, in the Western Zhou style, 9.8cm long **£200-300**



- 70 An Eastern carved variegated green hardstone scent bottle of trapezoidal section with pommel carved with stylized leaves. 4.5 cm wide x 6 cm high **£150-200**





## Asian Art, Thu, 4 November 2021 9:30

- 71 A group of Chinese vases, Qing and later, comprising a flambe Meiping, 19cm, a flambe garlic mouth vase, 22cm, a white ground Ge glaze Meiping, 20cm, a sang de boeuf vase, 21.5cm and a monochrome blue vase, 19.8cm **£400-600**



- 72 A Chinese rose quartz snuff bottle, Qing, carved in relief with two birds upon a blossoming magnolia branch, 5.5cm, a Chinese carved hardwood figure of Guanyin, holding a basket of peaches, a crane by her side, 17.5cm; a ruby glass snuff bottle with wheel etched decoration, 6cm; a carved hardwood figure of a boy upon a water buffalo and an Indian carved wood bowl, early 20th century, the edge with applied metal band above tightly carved flowers and tendrils, on a circular foot, 23cm dia, 12cm high **£60-100**



- 73 A large Chinese porcelain blue & white Kangxi style censer, painted with scholarly figures in a mountainous landscape with buildings and a lake, beneath a band of Buddhist symbols, on three short feet, 25cm dia, 13.3cm high **£400-600**



- 74 A Chinese blue & white dragon vase, Qing, 19th century, with ormolu mounts, painted with two writhing dragons chasing a flaming pearl amidst thick clouds, the ormolu mounts cast in the rococo style with shells and scrolls, 65cm **£4,000-6,000**



- 75 A large Chinese silk embroidered panel, early 20th century, worked with a variety of birds to include a phoenix, pheasants, peacock, eagle, quail, ducks, herons, swallows, cranes and butterflies, with bamboo, maple and blossoming prunus trees, rockwork and water, all against a wanzi and endless knot ground, 46cm x 84cm, in simulated tortoiseshell frame **£300-500**



## Asian Art, Thu, 4 November 2021 9:30

- 76 An impressive Indian ivory casket, 19th century, the hinged cover mounted with a recumbent Lord Vishnu and Lakshmi on the Seshanaga bed, with Hanuman and deity, with roundels of famous landmarks with painted elephant and lions with floral scrolls, an inscribed panel reads ' By the staff of Medical Department H.E.H The Nizam's State Railway Lallaguda (Decan), 25th Jany xxxx', with an applied horn rim, the base with applied carved panels of deities with titles and brief descriptions, the front three panels opening to reveal a sandalwood drawer, the stepped base on four ivory elephant supports, with four silver metal inscribed labels 'Presented to Dr. E.H. Hunt, Chief Medical Officer By The Staff Of The Medical Deptt, H.E.H, The Nizam's State Railway Lallaguda January 1931, P.V Lingam & Sons Ivory Works, Vizagapatam Branch: Secunderabad', 47.5cm wide, 34cm **£2,000-3,000**



- 77 A Japanese black lacquer katanakake, early 20th century, with four gilt lacquer Tokugawa family mons, to house three katana, the black gloss lacquer ground with gilt edges, 57.5cm wide, 32.5cm high  
**Save £100-150**



- 78 A Japanese silver figure of a Samurai warrior, Meiji period, standing in full armour, the helmet and breastplate with family mon with gilt highlights, on a square ebonised base, 16.5cm **£300-500**



- 79 A Chinese embroidered silk panel, early 20th century, with two cranes and lingzhi fungus beneath a gnarled pine tree, image 99cm x 33.5cm **£150-250**



- 80 A Japanese bronze kitsune, late Meiji period, of stylised form, seated on its haunches looking behind, 20.5cm **£200-300**



## Asian Art, Thu, 4 November 2021 9:30

- 81 A Chinese six panel hongmu folding room divider with blue & white panels, Qing, 19th century, the series of shaped panels painted with the various stages of rice and silk production, each panel within a moulded frame in turn framed by relief carved and pierced key mouldings, each section 181cm high & 44cm wide **£35,000-45,000**



- 82 A Chinese silk embroidered blotter cover, Qing, 19th century, a female holding a small figure, an attendant holding a sunshade, in a garden surrounding with blossoming prunus flowers and bamboo, two bats holding either a wan or cash above, within a gilt metal thread border, a large gilt thread and silk thread tassel to the bottom left corner, 42cm x 33cm (closed) **£100-150**



- 83 A Chinese robin's egg glaze brush washer and pen stand, 19th/20th century, the brush washer of inverted tapering square form with re-entrant corners, 4cm high, in wood box, the pen stand modelled as a rectangular table with fret work frieze, 6.2cm wide, 4cm high **£250-350**



- 84 A Chinese silver coloured hot pot, Qing, early 20th century, the cover and base engraved with two ducks amongst lotus flowers and leaves, each opposite a vacant cartouche, with simulated bamboo handles, two struck character marks to the underside, 17cm dia, 11.5cm high **£200-300**



- 85 A large Japanese imari dished charger, Edo period, 18th century, the centre with floral display framed by shaped cartouches with landscapes and flowers, with gilt and red chrysanthemums and gilt scrolls on a blue ground, the underside with sprays of chrysanthemums, 49cm dia, 9cm high **£300-500**





## Asian Art, Thu, 4 November 2021 9:30

- 86 A large Japanese charger, 19th century, painted with a bird alighting on a blossoming plum branch, with bamboo and peony, the underside with four red bats, six character Kutani Hayashi? mark, 47cm dia **£100-150**



- 87 A group of eight Chinese brush pots, Qing and later, comprising a marbled, Ge and sancai pots, two peach bloom, a famille rose square pot with re-entrant corners, painted Tongzhi seal mark, an auspicious fruits pot in green and manganese glaze with incense stick apertures and a squat circular stone pot with incised characters and foliage, **£200-300**



- 88 A large Japanese Arita dished charger, early Edo, painted with two figures crossing a bridge towards a seated scholar, beneath a blossoming plum tree, birds and clouds, 46.6cm dia, and three imari plates and two bowls, Edo and Meiji period, comprising three chrysanthemum shaped plates and two deep sided bowls, painted with chrysanthemums with plum blossom and diaper panels, the plates 23.5cm - 27.8cm dia, the bowls 21.7cm - 24.6cm dia and 10.8cm & 12.8cm high, a Ko Kutania container and cover, painted with immortals 22.5cm high and a Satsuma Egyptian revival small dish, 12.5cm dia **£100-150**



- 89 A Japanese kakiemon kendi, Edo, 1650 - 1700, of typical form, with ribbed body and spout, painted with a continuous pattern of gnarled tree trunks, 20.5cm **£250-350**



- 90 A Chinese Robin's egg glaze Bitong, of cylindrical form, 13cm high, 12.7cm dia, on wood stand **£250-350**





## Asian Art, Thu, 4 November 2021 9:30

- 91 An Indian carved and polished white jade dagger (Khanjar) handle of pistol grip form with applied yellow metal flowers set with semi-precious stones. 13 cm long. **£200-300**

- 92 A jade recumbent deer, looking back on itself, with archaic style incised decoration, pierced at the neck, 5cm long, 3.6cm high **£60-80**

- 93 A large Chinese blue & white Kangxi style bitong, of cylindrical form, painted with a landscape of two scholars and an attendant before buildings, mountains and a lake, the underside concaved and with a glazed central recess, 20cm dia, 16.8cm high **£300-500**

- 94 A Japanese blue & white vase, Edo, mid 17th century, the folded over rim above birds in blossoming plum trees, a spotted deer and sprigs of foliate, and another, 17th century, of waisted beaker form with flared rim, painted with prunus and bamboo shoots over a stag and deer on turbulent waves, 18cm & 23cm respectively (Qty: 2) **£200-300**

- 95 A Chinese white metal inkstone box, Republic period, of square form, the cover engraved with a garden scene with two ladies and a man, with presentation inscription, 9.7cm square, 4cm high **£400-600**



## Asian Art, Thu, 4 November 2021 9:30

- 96 A large Chinese brass double walled bowl, early 20th century, the exterior with a relief cast band of dragons amongst clouds, on three short feet, 30cm dia, 9cm high **£200-300**



- 97 A Japanese bronze fisherman signed Atsuyoshi, standing with a joyous expression upon his face, a fish in his left hand on the end of the line of his bamboo rod, a basket upon his back with a crab climbing on the side, on a well figured wood base, signed and with seal mark, 54cm overall **£3,500-4,500**



- 98 A Chinese watercolour on paper of Bodhidharma, early 20th century, standing in a long flowing red robe, lines of calligraphic script and a red seal mark, image 94cm x 35cm **£200-300**



- 99 A Japanese marine ivory bijin, Meiji period, standing beneath a parasol inscribed with two butterflies, whilst holding a small box, signed, 32.7cm, with wood stand 35.3cm **£100-150**



- 100 A collection of five Japanese ivory netsuke, Meiji period. Including Fukurokuju, Ebisu and three others some bearing signatures. 6 cm the tallest. **£300-500**



## Asian Art, Thu, 4 November 2021 9:30

- 101 An Indian grey/ green carved jade dagger (Khanjar) handle with scroll knuckle bow and segmented grip and pommel, together with an Indian carved spinach jade dagger handle with a knuckle bow in the form of a lion attacking a horses head 19 cm long. **£400-500**



- 102 A Chinese saucer dish, Guangxu mark and probably of the period, finely painted with a blossoming plum branch and green bamboo leaves, three character Run Tian mark, the underside with four grey bats, 14.7cm dia  
The blossoming plum tree and bamboo are often representative of a husband and wife. **£350-450**



- 103 A group of Yuan and later Longquan style celadon wares, comprising a twin fish bowl, with everted rim, 13cm dia; together with two tripod censers, one with raised ridges to the body, the other with a wavy rim, 7.5 & 8.3cm high, a small deep sided dish with everted rim, 12.5cm dia, a petal shaped lobed bowl, raised on a circular foot, 9.5cm dia and a censer with spaced beaded decoration, internal diameter 12.5cm **£250-350**



- 104 A large Chinese embroidered silk altar table panel, early 20th century, worked with five roundels of auspicious flowers and vases, surrounded by butterflies, beneath Buddhist symbols, 55cm x 210cm **£300-500**



- 105 A Japanese bronze and gilt metal figure of Shojo, Meiji period, the drunken spirit with long flowing hair, peering into a sakazuki, a joyful expression upon their face, their robe with gilt cranes, clouds and fan motifs with a double gourd attached to the waist, a cast gilt six character seal mark to the base, 17cm high, on a wood base **£3,000-4,000**



## Asian Art, Thu, 4 November 2021 9:30

- 106 A Japanese lacquered travelling shrine, Zushi, 19th century, the gilt interior with a carved softwood figure of Jizo Bosatsu before a gilt mandorla on a tiered dias, 25cm high **£100-150**



- 107 A Japanese silver and shibayama koro, Meiji period, the cover with two wading cranes and lotus leaf, the sides with cloisonne flowers, the koro with shibayama panels framed by cloisonne floral sprays and scrolls, the handles formed as phoenix, the base with miniature cloisonne flowers, signed on a gilt tablet xxxMasa, 19cm **£3,000-4,000**



- 108 An Indian pale sage coloured jade seal of cylindrical form with snarling lions head terminal with yellow metal set red hard stone eyes. 8.6 cm long **£400-500**



- 109 A famille verte yen-yen vase, Kangxi, mark & period, finely painted with figures from the tale 'A Journey to the West' attributed to Wu Cheng'en, the neck painted with Sun Wukong in a tree overlooking Tang Sanzang, Zhu Bajie & Sha Wujing, the body painted with Tang Sanzang returning to Emperor Taizong with scriptures, six character mark and Fredrick Bohman stock label to the underside, 46cm; together with two Chinese blue & white deep containers, 17th century & a flared rim bowl painted with pak choi, with metal rim and four character mark, 6.5cm - 14.5cm  
From the collection of A.F. Bohman  
From the collection of Fredrick Bohman **£200-300**



- 110 A Chinese press moulded tortoiseshell snuff box, Qing, 19th century, the cover with vacant roundel framed by conversing figures before buildings, pine and willow trees, the sides with a border of flower heads above buildings and trees, the base with a scholar at his desk with further figures before buildings and a pine tree, 9.5cm dia **£200-300**





## Asian Art, Thu, 4 November 2021 9:30

- 111 A large quantity of Chinese famille rose saucers, early 20th century, comprising seventeen with a peach bordered by auspicious flowers, with engraved collectors/tally marks, seven saucers with enamel shou symbols, a set of three with calligraphy and peony and a single saucer with a peach, bamboo and calligraphy, stamped and painted marks, 13cm - 16.5cm (Qty: 28) **£100-150**



- 112 A Persian gilt metal circular bracelet panel with deeply engraved probably devotional verse in Arabic calligraphy. With two articulated suspensions. 11 cm wide x 7 cm high. **£200-400**



- 113 A group of six Chinese porcelain brush rests and brush licks, comprising two mountain shaped rests, a blossoming prunus branch rest, a speckled glazed rest, a celadon double gourd shaped lick with gilt four character Yongzheng mark, and a gourd shaped lick painted with a red bat and gilt shou, widest 12.9cm **£250-350**



- 114 A good Chinese hardwood vase stand, Qing, 19th century, the octagonal top with inset rouge marble panel bordered by prunus flowers, above eight carved and pierced peach and leaf panels, the frieze carved with a variety of bats amongst cloud like foliage, the shape legs with eagle heads holding conjoined rings, united by a stretcher with lotus pod finial, the top 32cm, 90cm high **£300-400**



- 115 A Chinese vase stand, early 20th century, the channel carved and shaped legs with archaic chilong style brackets, united on a shaped base with turned feet, the top 23.4cm dia, 61cm high **£80-120**



## Asian Art, Thu, 4 November 2021 9:30

- 116 A Japanese silver pedestal dish, 20th century, the interior inlaid with gold paulownia, the Mon of the Emperor of Japan, within a gold inlaid key border, signed, 16.4cm dia **£150-250**



- 117 A Japanese shibayama concertina photograph album, late Meiji, containing fifty hand coloured photographs depicting bijin, dancers, sumo wrestlers, firemen, comical scenes, Yokohama Settlement, View of Matsushima, Kaga Hakone, Kusaga at Nara, Interior of Chioin Kyoto and others, each approximately 9cm x 13.7cm **£100-150**



- 118 A Chinese silver caddy by Zee Wo, circa 1900, the plain top on a spherical body a dragon around the centre, struck marks, 9.5cm; a Chinese silver bowl by Hung Chong, decorated with a stippled ground, with engraved presentation roundel 'SLEC Weekly Rink Competition 1929, won by A McLure', 9.5cm dia, a silver napkin ring engraved 'D N A McLure', and three silver dishes, each inset with a Chinese coin, 9.5 & 8.7cm dia. 442 grams gross weight **£150-250**



- 119 An Indian white Jade necklace with oval central panel with yellow metal set red stones detail, the panel with raised section bearing a probably devotional inscription in Arabic calligraphy. Mounted on silken cord with decorative bead terminals. 7.5 cm x 6.8 cm the jade panel. **£200-300**



- 120 A Chinese silk embroidered panel in hongmu stand, Qing, late 19th/early 20th century, finely embroidered with a variety of birds, with pine tree, blossoming prunus, lingzhi fungus, rockwork and peony, the stand with scrolling lotus fronds, with Buddhist lion finials and feet, 86cm high, 63cm wide **£600-800**



## Asian Art, Thu, 4 November 2021 9:30

- 121 A Chinese red soapstone five sided seal, of square form with an inscribed poem, 2.9cm **£300-400**



- 122 A large Chinese bronze censer, Qing, of circular form with everted rim, with applied lion mask handles, on three short feet, internal diameter 20.7cm, 15.2cm high **£200-300**



- 123 A Chinese Tang style bronze figure of a dancing bearded Tartar, a Buddhist lion pup and ball by his feet, on quadripartite base, 18.2cm high, a Burmese bronze Pegu warrior and a court dancer, early 20th century, a cast brass Lakshmi vilakku lamp and a Japanese antimony dressing table box, the lid with relief cast mountainous landscape, 18.5cm wide **£100-150**



- 124 A large Japanese lacquer and shibayama dished plaque, Meiji period, with a carved ivory and bone ikebana display of peony and other flowers, suspended from a cord, 54cm dia **£100-150**



- 125 A Chinese Shoushan stone seal, relief carved with figures crossing a bridge, mountains and buildings beneath a blossoming prunus branch, one side inscribed with calligraphy, the top with rounded corners, the seal carved with six character marks, 10.5cm **£400-600**



## Asian Art, Thu, 4 November 2021 9:30

- 126 A Chinese silver model of an armed boat, early 20th century, the three masted vessel with deck cannons, single figure, flags and oars, with a plaque with presentation inscription as a present to the Director of the Hong Kong Girl Scouts, and a smaller silver sailing vessel, 17.5cm high, 17cm wide & 9cm x 6cm **£100-150**



- 127 A large Chinese carved variegated grey hardstone erotic study of an erect phallus with a cicada resting upon it. 25 cm long (!) **£200-300**



- 128 A Chinese silver metal, cloisonne and jade container and cover, early 20th century, set with polished stone cabochons between cloisonne leaves and silver cash symbols on a mesh ground, struck Silver to the underside, 8cm **£200-300**



- 129 A Japanese lacquer suzuribako, Meiji/Taisho period, in the form of a taiko drum, decorated with gilt paulownia leaves and tendrils against a simulated wood grain, the cover interior with gilt cockerel and silver lacquer hen, with ink stone and suiteki (the latter minus its cover), 20cm wide, approx 10.5cm high **£300-500**



- 130 A Japanese kakiemon octagonal tea bowl & saucer, Edo, 18th century, painted with quail and insects with blossoming plum, with a meandering scroll border, the rims a thick chocolate brown, the tea bowl 7.4cm dia, 4.3cm high, the saucer 9.9cm dia  
Save **£200-300**





## Asian Art, Thu, 4 November 2021 9:30

- 131 A large Japanese lacquered bronze charger by Kuroda Kiichhi, Kyoto, late Meiji period, the centre with panels of buildings, Torii gate, boating figures and bridges against a diaper ground, within an outer band of shaped panels with a variety of domestic and wild birds, within a ground of paulownia leaves and tight gilt scrolling fronds,, the border with Manchurian cranes flying over turbulent waves, signed in gilt verso, 60.5cm dia **£4,000-5,000**



- 132 A Chinese sang de boeuf vase, now fitted as a table lamp with wood base, the vase only approximately 23cm **£400-500**



- 133 An Indian moss green jade archer's ring yellow metal set with cabochon hardstone flowers and boss motif. 4.6 cm x 3.3 cm **£400-500**



- 134 A Chinese white jade seal, the seal of rectangular form surmounted by a recumbent lion dog, signed, the matrix with four characters, 3cm high, 2.6cm wide **£600-800**



- 135 A Japanese double walled silver two handled cup, Meiji period, of cylindrical form, each side with a writhing dragon amongst fiery clouds, against a planished ground, the handles formed from the dragons tail, struck E & D with kagikan, 559.5g, 14cm **£1,200-1,500**



## Asian Art, Thu, 4 November 2021 9:30

- 136 A possibly Chinese carved rock crystal figure of a fish with engraved detail. 5 cm long x 2.5 cm deep. **£100-200**



- 137 A Chinese blue & white tea bowl, 18th century, painted with warring figures, on horseback and foot, 5.5cm dia; and a blue and white sake bowl, 6.7cm dia **£150-200**



- 138 A Chinese white jade seal, of square form, the seal formed of four characters, the tapering top with suspension holes, 2.6cm **£400-600**



- 139 A group of six Chinese monochromes, Qing and later, comprising peach bloom and tea dust onion shaped vases, a cafe au lait twin handled vase, a snuff bottle with six character Yongzheng mark, a claire de lune type ovoid vase and a lobed vase and cover, with alternating underglaze decoration of a scholar and peony, 9cm - 15.5cm **£300-500**



- 140 A Japanese bronze rat, Meiji period, seated on its haunches, holding a chestnut, kakihan to base, 9.6cm high **£200-300**



## Asian Art, Thu, 4 November 2021 9:30

- 141 A Japanese bronze garniture by Nogawa, Meiji period, the covered bowl with kirin knop and inlaid with mixed metal Buddhist symbols, the body with cranes wading amongst reeds, on three inlaid legs with scroll terminals, and a pair of matching vases, inlaid with mixed metal cranes wading amongst reeds, marked to the base, 19.5cm & 15.4cm high **£2,500-3,500**



- 142 A probably Indian or Iranian green agate pendant of arched arabesque form with engraved probably devotional verse in Arabic calligraphy. 9 cm high by 6.6 cm wide **£200-300**



- 143 A Japanese bronze okimono of a hawk, Meiji period, finely cast with well detailed feathers, the eyes in gilt and shakudo, signed and with circular seal mark, standing on a rustic burr wood stump, 49.3cm overall **£5,000-7,000**



- 144 A Persian white metal mirror, early 20th century, embossed throughout with figures and flowers, the glass bordered with blue enamel panels, 44cm x 31.5cm **£100-150**



- 145 A Chinese watercolour on silk section, Ming or later, painted with birds on blossoming branches, with calligraphy and red seal mark, 21.5cm x 24cm **£100-150**



## Asian Art, Thu, 4 November 2021 9:30

- 146 A Japanese bronze incense burner, Meiji period, modelled as a moon gazing hare, a bell attached to its neck, seated on a low table with key border, 26cm high, 16cm deep; and a small Japanese bronze two handle vase, signed Yoshida?, 11cm **£100-150**



- 147 An Indian carved rock crystal tear form panel with an engraved and gilt devotional inscription in Arabic. 4.5 cm long x 2.5 cm wide. **£200-300**



- 148 A Chinese soapstone seal, Qing, of rectangular form, the stone shaped to fit a hand, the matrix with four characters, signed 4.8cm high, the matrix 2.8cm x 3cm **£200-300**



- 149 A large pair of Chinese blue & white altar form candlesticks, Qing, 19th century, of square section form, painted with the eight Taoist immortals, with smaller cartouches painted with foliage, against a diaper ground, 45cm **£6,000-8,000**



- 150 A collection of thirteen Chinese snuff bottles, Qing and later, in glass, stone, metal and porcelain, tallest 14cm, smallest 5.3cm **£100-150**





## Asian Art, Thu, 4 November 2021 9:30

- 151 A Chinese Western Zhou style green jade blade pendant, 8.9cm **£200-300**



- 152 A large quantity of Chinese famille rose saucers, early 20th century, painted with a peach to the centre and bordered by auspicious flowers, red stamped Tongzhi seal marks or eternal knot painted marks, 13cm - 16.5cm dia (Qty: 57) **£100-200**



- 153 A Chinese yen-yen vase, Qing, 19th century, painted with panels of noble figures and attendants, on a floral ground with birds, 39.8cm **£150-250**



- 154 A collection of five Tibetan carved agate Dzi beads of turned elliptical form, some with banded and some with "Eye" decoration 6.3 cm long the largest. **£400-600**



- 155 A Chinese white soapstone seal, the top with rounded corners, one side inscribed with character marks and three vacant sides, the seal with four large character marks, 6cm **£250-300**



## Asian Art, Thu, 4 November 2021 9:30

- 156 A large Chinese Famille verte hexagonal vase, Qing, 19th century, the neck with a continuous scene of court figures between a series of diaper, scroll and geometric bands, the main body painted with panels of dignitaries, court figures and attendants, one of which with an elephant, with further panels of blossoming plum branches and a dragon amongst fiery clouds, all between scroll, ruyi head, key fret and diaper bands, 54.5cm **£300-500**



- 157 A large Chinese thousand flower vase, Qing, late 19th century, with applied elephant mask and ring handles, 46cm **£2,000-3,000**



- 158 An Indian carved and shaped rock crystal dish of leaf and fruiting vine form 18.5 cm long x 16 cm wide. **£100-200**



- 159 A Chinese silver four piece tea set by Zeewo, early 20th century, each piece embossed with writhing opposing dragons facing a flaming peach, with simulated bamboo handles and knobs, each pearl engraved with a presentation inscription, 2261g, struck marks, the tray 37.5cm dia **£3,500-4,000**



- 160 A Chinese watercolour on silk, Qing, late 19th century, painted with a tributary envoy and attendants upon a mountain path bearing gifts for the Emperor, signed and with Kangxi seal stamp, image 125cm x 40.5cm **£400-600**



## Asian Art, Thu, 4 November 2021 9:30

- 161 A Japanese Me-No-Shita lacquered iron Menpo, 19th century, with ressei expression, horsehair moustache, the removable nose flanked by L shape odayori-no-kugi, the open mouth showing gilt teeth and a red top lip, the interior red lacquer, with a four layer yodare-kake throat guard, together with Edo period Tati-eri, two Sune-ate and a single Do plate **£500-800**



- 162 A Chinese well carved Shoshan stone seal, of rectangular form with rounded top, carved in relief with two figures in a boat approaching a large building, with mountains in the background, signed, 3.8cm **£400-600**



- 163 A Chinese rock crystal figure of Guanyin, late Qing, standing in long flowing robes, her hair in a chignon, a basket in her hand, 27cm, on carved wood stand, 30.5cm overall **£500-7,000**



- 164 A Japanese silk embroidery of two tigers, Meiji/Taisho period, both snarling whilst in long grass, 29.5cm x 48cm **£70-100**



- 165 Two Chinese jun ware censers and a two eared jar, Yuan/Ming or later, the small censer with a purple splash, on three short splayed legs, 5cm high, the taller censer with a with brown oxide rim, with speckled glaze, on three short legs, 8cm, the jar with two small loop tapering handles/ears, 11.5cm high, internal diameter 10.8cm **£300-500**



## Asian Art, Thu, 4 November 2021 9:30

- 166 A Japanese ivory Okimono of a bull elephant, Meiji period, late 19th century. The animal walking forward with its head inclined, and being a two-character 11 cm long mark to the foot. Together with an Okimono of a gentleman carrying a child on his hip and a figure of a gentleman holding a rolled carpet. (Qty: 3) **£150-200**



- 167 A Mughal carved copper plate, 17th/18th century, Mughal, India, with floral design and calligraphic inscriptions on the rim, 19.9cm dia **£250-350**



- 168 An Indian hardwood coffee table, 20th century, constructed from a window with metal grill and set into a frame with carved foliate corners, with a glass top, on four reeded tassell shaped legs, 95cm wide, 45cm high, 75.5cm deep **£100-150**



- 169 An Indian carved padouk picture frame, late 19th century, with gothic brass hinges, and later oak easel support, 49cm high, 33.5cm wide **£50-80**



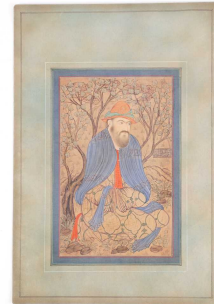
- 170 A probably late 19th century Holy Quran with leather-bound spine and sign of marbled boards the laid paper leaves with handwritten black and red Islamic script. 20 cm x 16 cm. Together with one other similar. (Qty: 2) **£150-200**



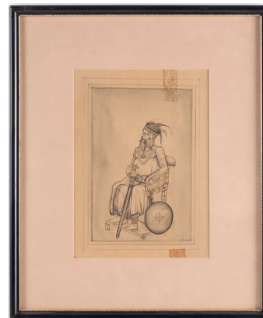


## Asian Art, Thu, 4 November 2021 9:30

- 171 Indian school, a seated Dervish, wearing a blue robe with a red sash over a gilt decorated undergarment, seated beneath a canopy of trees, a signed tablet to the right, within a blue border, coloured ink and watercolour, mounted on green tinted card, image 22.4cm x 14.8cm **£200-300**



- 172 An early 20th-century Indian school watercolour sketch depicting an elderly Maharaja seated with a feathered turban, sword and shield on a raised throne, within ruled borders. 22 cm x 16 cm **£100-150**



- 173 Indian school, 19th/20th century, a Mughal emperor in horse drawn carriage with attendant, with radiating gilt nimbus, seated holding a red flower, the carriage with gilt foliate decoration, before a background of seemingly endless fields and hills, within a coloured border, gouache, 31.5cm x 41.5cm **£400-600**



- 174 A Safavid copper tinted bowl, 17th century, Iran, Persia, with a band of calligraphic inscription, 13.8cm dia, 4.5cm high **£200-300**

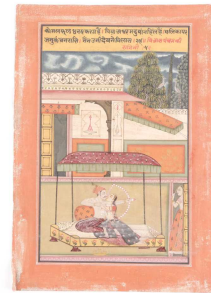


- 175 Indian school, a Mughal style exterior court scene with shah & consort with attendants, within floral borders, 31cm x 25.5cm **£100-150**



## Asian Art, Thu, 4 November 2021 9:30

- 176 A scene from a Ragamala series, Jaipur, Rajasthan, Ragini Vibhasa, often depicted as the man, annoyed at being disturbed from his amorous pursuits, shooting a lotus arrow at a loud rooster, in this image we see him aiming his bow at a standing female, gouache with some gilt decorations on paper, overall 31.7cm x 22.5cm **£300-400**



- 177 A 19th-century Indian school manuscript page depicting a young Sha Jahan and Mumtaz seated on a verandah with panels of Arabic script within ruled borders. 14 cm x 8 cm **£100-150**



- 178 An Indian pale green and cream jade carving of the head of an Indian water buffalo .9 cm wide by 9 cm long. **£200-300**



- 179 Indo/Persian school, portrait of a seated Shah, with gilt nimbus, smoking a hookah within a fenced garden, within a border of coloured ink, watercolour, 20cm x 12cm, overall 27.8cm x 15.5cm **£300-400**

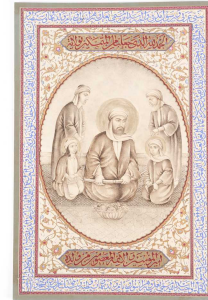


- 180 A Persian white metal mounted rectangular red hardstone rectangular cartouch pendant, intaglio cut with the three Imams of Shia and a recumbent lion on an Islimi scrolling ground. The loop suspension bearing two impressed marks. 6.1 cm x 4.7 cm the panel **£200-300**



## Asian Art, Thu, 4 November 2021 9:30

- 181 Persian school, 20th century, Imam Ali with his sons Hasan & Husayn, each with gilt nimbus and two standing disciples, the main image almost en grisaille, with gilt lotus flower and frond ground with two calligraphic panels and a running calligraphic border, gouache and gilding on paper laid onto card, overall 32.3cm x 21.7cm **£300-400**



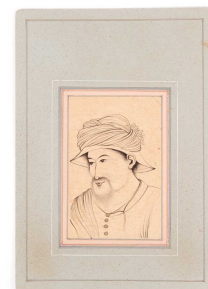
- 182 A Persian Kard and scabbard, Qajar, 19th century, with wootz blade and gold koftari and calligraphic inlaid decoration along the blade spine and handle, terminating in a gilt suspension loop, concealed within a Kard form scabbard with gold koftari decoration, the handle with two calligraphic panels, the hinged pommel with suspension loop, the blade 16cm, the Kard overall including suspension loop 27.8cm, the scabbard 35.5cm overall **£200-300**



- 183 A 19th-century Indian school manuscript page depicting a hunting scene with a horseman with lance and figures dispatching game on foot, above a panel of Arabic script within ruled borders. 14.5 x 8.5 **£100-150**



- 184 Indo/Persian school, 20th century, portrait of a bearded man, pen and ink, laid onto card, image including borders 17cm x 11.7cm, overall 29.9cm x 21cm **£300-400**



- 185 A Persian (Bokhara) brass coffee pot, Qajar Dynasty, With hinged domed cover, short angles spout, the body of flattened baluster form with a central lozenge and bands of Khorasan style vines on a spreading circular foot. 32 cm high **£200-300**



## Asian Art, Thu, 4 November 2021 9:30

- 186 Indo/Persian school, a full length standing profile portrait of a finely dressed nobleman, holding a sprig of narcissus beneath a gilt crescent moon, coloured pigments and gilding, within gilt and pale blue borders, 23cm x 15.5cm **£300-400**



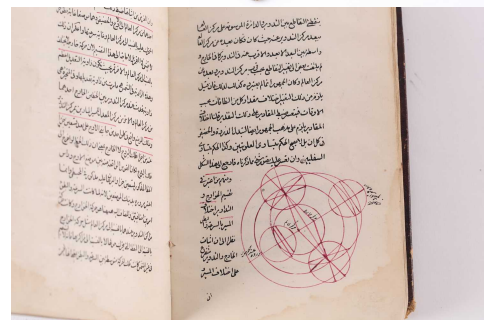
- 187 A Persian Dervish's Coco de Mer Kashkul, Qajar Dynasty, carved with bands and panels of Islamic calligraphy and the figure of a dervish, with decorative chain mounts. **£600-800**



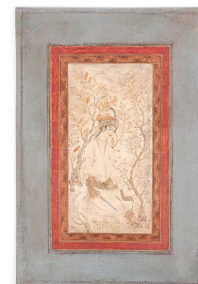
- 188 A Tibetan white metal blind filigree worked leaf-shaped pendant mounted with a figure of Green Tara set with coral and turquoise. 6 cm high x 5 cm wide. **£100-150**



- 189 A Persian leather-bound volume relating to astronomy and geometry of the planets, possibly late Qajar Dynasty. The pages bearing diagrams and handwritten script. 18 cm x 11 cm. **£400-600**



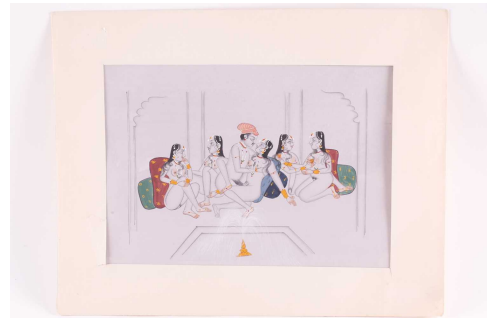
- 190 Persian school, a nim qalam pen and coloured ink portrait of a seated Qajar prince, with gilt sash and seated between two gilt trees, a bird flying above, within running foliate and red ground borders within coloured ink bands, laid onto card, overall image including borders 21cm x 12.3cm, overall 28.7cm x 19.6cm **£400-600**





## Asian Art, Thu, 4 November 2021 9:30

- 191 Indian School, circa 1900, an erotic gouache painting of a king embracing his mistresses wearing jewellery, from a Book of Kamasutra, 19.8cm x 27cm **£200-300**



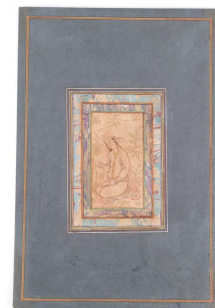
- 192 An Ottoman-style baluster form gilt brass coffee pot, with star and crescent finial to the hinged domed cover and simple loop handle. The body with chased minaret and scroll decoration, on a spreading circular foot. **£200-300**



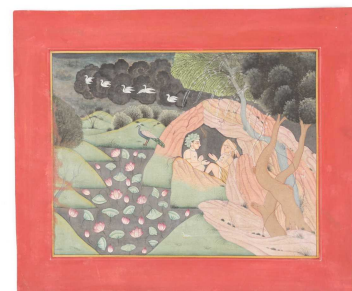
- 193 A 19th Armenian /Ottoman Turkish white metal ladies belt with inset niello decorated panels and a filigree worked clasp. 11.9 ozt. 82 cm long **£150-200**



- 194 Mughal School, 19th century, a nim qalam coloured ink Princess within a garden, kneeling whilst inspecting a plant, a fruit in her left hand, a ewer at her knees, surrounded by gilt leaves, within marbled and coloured ink borders, mounted on card, image including borders 16.2cm x 11.2cm, overall 33.6cm x 22.7cm **£400-600**



- 195 Indian school, a Ramayana scene, Rama pining after Sita being comforted by Lakshmana in a forest cave, at night with five flying geese and a pond full of lotus flowers, within a red border, the reverse with faded lines of calligraphy, watercolour with some gilt, 19.5cm x 23.2cm **£300-400**

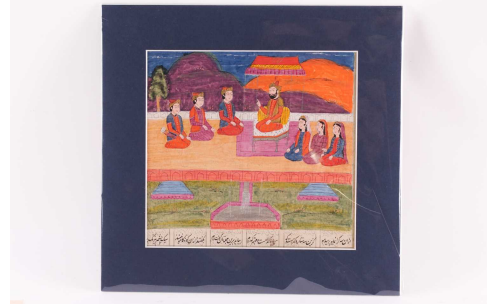


## Asian Art, Thu, 4 November 2021 9:30

- 196 A large Indian carved ivory figure of an elephant with inset ebony dot eyes, late 19th century. 16 cm long x 12 cm high x 8 cm wide. Together with another with raised trunk and a pair of Indian carved ivory elephant paperweights each on a base fashioned from mammoth tooth section and one similar and one unmounted carved elephant (Qty: 6) **£100-150**



- 197 An Indo/Persian gouache painting of a Sikh king, 19th century, seated in the courtyard under a canopy with his children, from an illustrated copy of Shahnama with calligraphic inscription at the bottom and verso, 22cm x 23cm **£300-500**



- 198 A probably early 20th century Holy Quran with handwritten black and red Islamic script within gilt borders, within a tooled red Morocco leather envelope binding. 23.5 cm x 16 cm, together with one other probably 19th century Holy Quran with tooled leather envelope binding. **£150-200**



- 199 Indian School, Rajasthani, 'The Estrangement of Radha', her attendants encouraging her to meet with Krishna, the god of love being pursued by two attendants, gouache and watercolour heightened with gilding, within coloured borders, 33.7cm x 22.2cm **£300-400**



- 200 A Persian/ Iranian enamel cylindrical gilt brass box and cover. decorated with Arabesques and a band of Kufic script to the frieze. 8 cm diam x 4 cm high. **£80-100**



## Asian Art, Thu, 4 November 2021 9:30

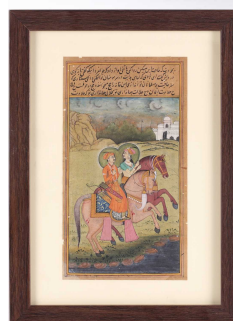
- 201 A Burmese brass pandan box, the six lidded compartments secured by a screw in bird form handle and an Indian brass Pooja oil pot, with cow head spout, 12cm **£70-100**



- 202 A Safavid copper tinted pot, Iran, Persia, 17th century, with a bank of calligraphic Inscription on the centre body and floral motifs on the neck and upper rim, 14cm **£200-300**



- 203 A 19th century Indian school manuscript page painted with a nobleman and consort on horseback in a rolling landscape (possibly Shah Jahan and Mumtaz Mahal, with a panel of Arabic script above and within ruled borders. 23 cm x 13 cm **£150-200**



- 204 Indo/Persian school, a full length standing profile portrait of a dark skinned Shah, finely dressed with blue and white striped trousers and a floral sash, with gilt nimbus, blossoming flowers around his feet, within a gilt speckled black ground and red border, the reverse with hand written ink calligraphy, 28cm x 19cm **£300-400**



- 205 A 19th-century Indian school manuscript page depicting a young Mughal Emperor's erotic tryst with a semi-clad female consort, below a pen worked panel of Arabic script. Within ruled borders. 17 cm x 9 cm. **£150-200**



## Asian Art, Thu, 4 November 2021 9:30

- 206 A probably Indian white metal spherical hanging pomander. With an engraved and pierced exterior the interior fitted with a gimbaled receptacle. Suspended on a simple chain with a decorative hook terminal. **£100-150**



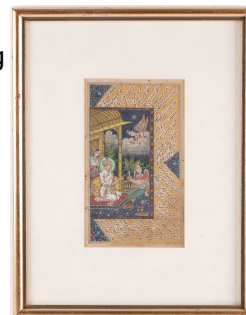
- 207 An Ottoman brass and inlaid Divit, of typical form, inlaid with silver metal calligraphy within copper borders, a cast calligraphic seal to the underside, 34cm **£80-120**



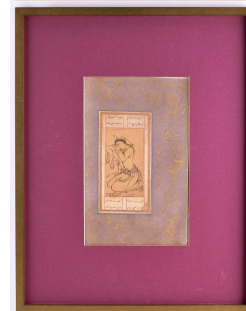
- 208 An Eastern white metal and black onyx signet ring with pierced shoulders the oval stone with engraved Islamic calligraphy. **£100-150**



- 209 A 19th-century Indian school manuscript page depicting a young Mughal Emperor visited by female winged angel bearing offerings. within a border of diagonal pen worked Arabic script. 10.5 cm x 7.5 cm **£150-250**



- 210 Persian school, a nim qalam pen and ink drawing of a daydreaming female, kneeling with her arm resting on a boulder, panels of calligraphy above and below, within a gilt and coloured ink border, laid onto card decorated with gilt mythical beasts and flowers, image and text 16cm x 8.5cm, overall 26.5cm x 16.5cm **£400-600**





## Asian Art, Thu, 4 November 2021 9:30

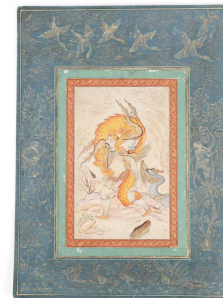
- 211 Indo/Persian school, 20th century, a pair of illuminated book pages, each depicting Persian hunters on horseback and foot, hunting down deer and tigers, with panels of handwritten calligraphy within gilt coloured leaf pendant borders on a dark blue ground, the reverse with calligraphy, gouache and gilding 32,1cm x 23.5cm **£150-250**



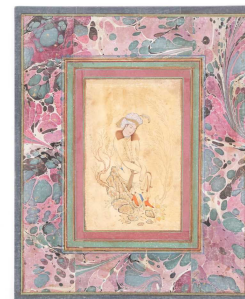
- 212 A Persian book page, the text with small illuminations, within a gilt border, 13cm x 8cm, a Persian copper bowl with calligraphic band above panels of flowers, with traces of pigment throughout, 21.5cm dia, a silvr calligraphic stand and bowl; and a Peruvian conquistador cast bronze stirrup, 27cm **£100-150**



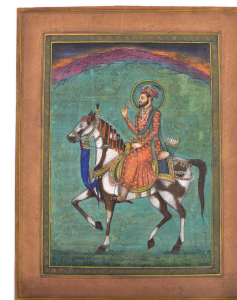
- 213 After Mu'in Musavvir, Isfahan school, a warrior fighting off two dragons, possibly a depiction of Malik attacked by two of the seven dragons he faced in the Khavaran-nameh, within coloured borders and an outer border painted with gilt ducks in flight and on a pond with monkeys in trees, watercolour laid onto card, overall 32.2cm x 23.8cm **£400-600**



- 214 Isfahan school, Persia, a young pensive Dervish, seated upon a rock before a gilt tree, a gilt sash around his long sleeved robe and turban, with coloured and marbled borders, overall 28.5cm x 22.9cm **£400-600**



- 215 Indian school, an equestrian portrait of the Mughal emperor Shah Jahan, 19th century, with gilt nimbus, holding a small narcissus flower, his quiver with serpent shape bow, before a mountain at sunset, the outer border painted in gilt with floral motifs, gouache and gilding, overall 33.5cm x 26.2cm **£300-400**



## Asian Art, Thu, 4 November 2021 9:30

- 216 An Indo Persian portrait of a Safavid Prince, kneeling in an ornate gilt robe with coloured scrolling leaves, a hawk picking at his gloved right hand, 21.2cm x 15.2cm **£300-400**



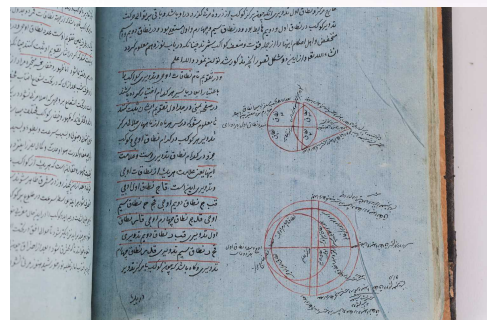
- 217 An Indian brass shrine with Vishnu flanked by consorts Sridevi & Bhudevi, beneath a Shesha canopy, the figures removable and on a raised rectangular platform, vacant apertures verso, 23cm high, 18cm wide **£200-300**



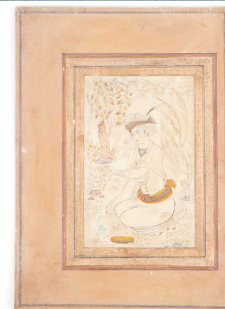
- 218 A panel of three Cuerda Seca Islamic tiles, Persian or Central Asia, 19th century, 38cm x 12.8cm overall **£150-250**



- 219 A Persian leather-bound volume relating to the science of astronomy, probably late Qajar Dynasty. The blue pages with handwritten Arabic text and diagrams and notes in the margins. 22.5 cm x 17.5 cm. **£400-500**



- 220 Mughal school, 19th century, a nim qalam pen and coloured ink Prince in a garden, kneeling whilst dropping water upon a plant, before a blue and white ewer and dish of food, a gilt tree behind him, within a double running border of gilt foliage, speckles and coloured ink bands, mounted on card, image including borders, 20.3cm x 14.5cm, overall 28.5cm x 20.4cm **£400-600**



## Asian Art, Thu, 4 November 2021 9:30

- 221 A Persian school watercolour study of a Turko-Mongol horseman., Qajar Dynasty, turning bow in hand to fire upon his pursuers. Affixed to a contemporary cad mount and within ruled borders. 32 cm x 23 cm cm **£400-500**



- 222 Kalighat School, West Bengal, Jagannath (Lord of the universe) with his brother Balabhadra and sister Devi Subhadra, 20th century, watercolor, Jagannath is a deity worshipped in regional Hindu traditions in India and Bangladesh, within Hinduism he is the supreme god, Purushottama, Para Brahman, to most Vaishnava Hindus, particularly the Krishnaites, Jagannath is an abstract representation of Krishna, sometimes as the avatar of Krishna or Vishnu, to some Shaiva and Shakta Hindus, he is a symmetry-filled tantric form of Bhairava, 45cm x 33cm **£150-250**



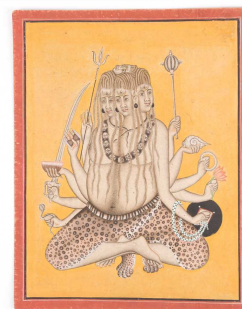
- 223 An Eastern white metal and black onyx gentleman's ring, the rectangular stone with intaglio cut Islamic calligraphy, the stone measuring approximately 2 cm x 1.4 cm. **£100-150**



- 224 A Persian brass chamber stick, Qajar, 19th century, Iran, Persian, carved and decorated with seated or kneeling figures and floral bands, dish diameter 15.5cm, **£150-250**



- 225 Indian School, Harihara as Sadashiva, late 19th/20th century, a gilt crescent beneath each third eye, principally pen and coloured inks, on paper/card, overall 25.9cm x 20.3cm **£300-400**





## Asian Art, Thu, 4 November 2021 9:30

- 226 A pair of Persian oval miniature paintings on ivory, early 20th century. Depicting a hunting scene with men on horseback and a scene of seated turbaned figures being presented with a basket of flowers in a garden. Each panel in a thin white metal mount and bearing an eastern gentleman's head device to their reverse. 6 cm long x 4.5 cm wide. **£120-150**



- 227 Indian school, 19th century, portrait of a Marahaja, seated in a plain interior, barefoot with fashioned facial hair and dressed in opulent clothing, with two swords and resting on ornate plump cushions, gouache with gilding, 32.5cm x 25.5cm **£300-400**



- 228 Indian school, 20th century, Raja Ram Singh spearing a tiger from the back of an elephant, an archer behind him whilst a huntsman runs alongside brandishing an oversized sword and small dhal, within a floral running and gilt borders, gouache heightened with silver, overall 28.3cm x 35.6cm **£200-300**



- 229 A Persian heavy steel padlock, Qajar Dynasty. Profusely engraved with Arabic text and islami decoration to the barrel and shackle with a hidden sliding mechanism. 9.5 cm wide x 12 cm high **£200-300**



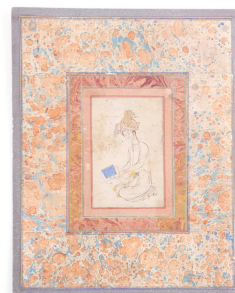
- 230 A pair of Islamic style doors, 20th century, carved and painted with flowers and criss cross lines, with carved architrave, each 225cm high, 117.5cm wide **£400-600**





## Asian Art, Thu, 4 November 2021 9:30

- 231 A Mughal school watercolour study of a young gentleman in an elaborate turban reading a book, 19th century. Possibly depicting a young Shah Tahmasp, on a marbled contemporary card mount and within ruled borders. 31 cm x 24.5 cm **£400-500**



- 232 A probably Middle Eastern oval white metal pendant inset with an agate panel carved with a seated gentleman in Arabic headdress in low relief. 6.5 cm long **£100-150**



- 233 An early 20th-century Indian manuscript page painted with the divine couple Lord Krishna and the Goddess Radha walking beside a river with blossoming trees and flying storks within a meandering floral border. 16.5 cm x 12 cm **£150-250**



- 234 An Indian bronze standing figure of Vishnu, 19th century, standing on a square platform; and a large Benin bronze figure of a standing warrior, HEIGHT????? **£100-150**



- 235 A 19th-century Indian school erotic watercolour sketch depicting a gentleman in Western attire in congress with a naked Indian courtier and her companions also in a state of undress. Some signs of former body colour **£150-250**



## Asian Art, Thu, 4 November 2021 9:30

- 236 An album page drawing of an oversized iris and small poppies, Qajar, Iran, 19th century, in coloured pigments, within a marbled border, paper laid onto card, image including border 23.3cm x 14cm, overall 32.5cm x 19.4cm **£400-600**



- 237 A large Eastern turned agate elliptical bead, together with a probably Persian rock crystal pendant of angular form one other rock crystal pendant and an agate pendant. 15 cm long the primary item. **£150-200**



- 238 A probably 19th century Holy Quran handwritten on laid paper with black and red Islamic script also embellished with scattered illuminated palettes and Arabesques, within a tooled leather envelope binding. 17.5 x 13 cm. together with one other probably 19th century Holy Quran. (Qty: 2) **£150-200**



- 239 A Chinese blue & white vase and cover, Qing, Kangxi, the cover with pointed knob and painted with lotus flower scrolls within a prunus blossom and cracked ice border with barbed rim, the neck with ruyi head cloud collar, the body painted with prunus and cracked ice, 45cm **£1,200-1,500**



- 240 A Chinese Phoenix vase, painted with four archaic Phoenix (Fenghuang) amongst lotus flowers and fronds, a central recessed band painted with lotus flowers and Shou within gilt bands, all between ruyi head and false gadroon bands, bears six character Guangxu mark, 40.5cm high, on later wood stand **£1,500-2,500**

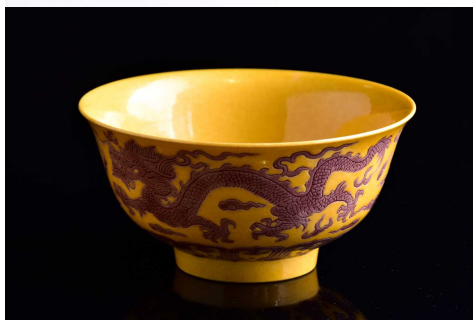


## Asian Art, Thu, 4 November 2021 9:30

- 241 A pair of Chinese blue & white baluster form candlesticks, 20th century, painted with Buddhist monks in conversation and meditating, amongst plantain leaves, pine and large boulders, 17.5cm **£300-500**



- 242 A Chinese aubergine and yellow dragon bowl, the exterior with two incised dragons chasing flaming pearls amongst clouds above a false gadroon border, the interior with Shou symbol, six character Kangxi mark within two concentric circles, 10.5cm dia, 5.1cm high **£400-600**



- 243 A Chinese dished plate, early 20th century, painted with a red scaley dragon chasing pearls amongst clouds on a yellow ground, the outer border with Buddhist symbols, the underside with three dragons, with flaming pearls and flowers on a yellow scraffito ground, underglaze blue seal mark, 25.2cm dia **£100-150**



- 244 A quantity of Chinese saucers, early 20th century, loosely painted in enamels with butterflies above a lotus flower, lotus flowers, feng-huang (phoenix), dragons, three hens and others, stamped and painted marks, 13cm - 16.5cm (Qty: 20) **£80-120**



- 245 A Chinese blue & white ginger jar, Qing, Kangxi period, well painted with a scholar at the foot of a mountain, an attendant by his side holding a scroll, and with a continuous landscape of mountains, buildings and a single figure with scroll before a fishing boat, beneath an ammonite scroll border, applied label for Marchant, London, Kangxi 1662 - 1722, 18.5cm, on wood stand **£500-800**



## Asian Art, Thu, 4 November 2021 9:30

- 246 A Chinese blue & white dragon jardiniere, painted with two dragons chasing a flaming pearl amongst clouds, 24.5cm dia, 18cm high **£200-300**



- 247 A pair of Chinese blue & white moon flasks, Qing, late 19th century, each with ruyi sceptre handles, the neck painted with a cell border above the circular panels painted with landscapes, on a scrolling lotus ground with false gadroon base, each with apocryphal four character Kangxi mark, 15cm & 15.4cm **£400-600**



- 248 A near pair of Chinese porcelain lotus plates, six character Guangxu mark and possibly of the period, each centre with three lotus flowers amongst scrolling tendrils framed by two concentric rings, the underside with six lotus flowers and leafy tendrils, 15 & 15.2xcm dia, 3 & 3.3cm high **£600-800**



- 249 Three Chinese miniature Yixing teapots, Qing and later, 19th/20th century, each with incised calligraphy around the shoulder, the knops formed as a frog, a fish and a peach, incised marks to the underside, 5.5cm - 6.5cm **£150-250**



- 250 A Chinese famille rose pilgrim flask, late 19th/early 20th century, the centre decorated with peaches and bats and encircled by wreaths of lotus and lingzhi on a yellow ground, the handles with moulded ruyi heads, apocryphal Daoguang seal mark, 27.5cm **£400-600**





## Asian Art, Thu, 4 November 2021 9:30

- 251 A Chinese famille rose lidded ewer and bowl, late Qing, painted with panels of exotic birds and butterflies in nm=naturalistic surroundings, with lotus flowers and scrolling tendrils on a light green ground, the ewer 39.5cm, the bowl 40.8cm dia **£200-300**



- 252 A Chinese blue & white cistern, Qing, Qianlong, painted with court ladies and attendants below bands of diaper and ruyi heads, the cistern housing formed as a snarling dragons head, 38cm high **£800-1,200**



- 253 Two Chinese porcelain brush washers, modelled as a bat alighting on a peach branch with two fruits on a shaped dish with radiating lines, impressed Qianlong seal mark, 15.5cm dia; and another modelled as a lustrous aubergine glazed Bixie upon a large turquoise leaf, 11.5cm dia **£200-300**



- 254 A Chinese porcelain deep sided bowl, six character mark of Xianfeng and possibly of the period, a white rim gives way to a deep blue monochrome ground terminating just before the foot rim, 13.5cm dia, 6.5cm high **£300-500**



- 255 A pair of Chinese famille verte vases, Qing, late 19th century, each of square section, with aubergine glaze dragon handles, the sides finely painted with blossoming prunus, birds and rockwork, cranes amongst lily pads and flowers, peony and chrysanthemums, 30cm high **£1,500-2,500**

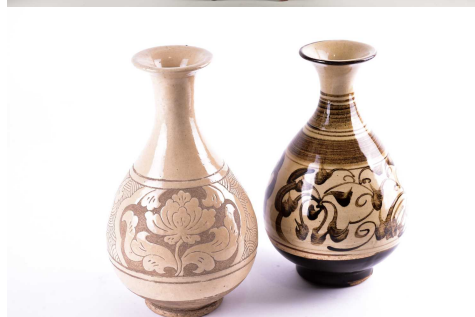


## Asian Art, Thu, 4 November 2021 9:30

- 256 A Chinese porcelain figure of a seated Luohan, Qing, 18th/19th century, his facial features, fingers and toenails picked out in black, wearing a black armless robe with famille rose flowers and with ammonite scroll hem, his lower garments with flowers against turquoise and yellow grounds, 41cm, on a wood stand 52cm **£1,500-2,000**



- 257 Two Chinese Cizhou vases, the taller vase carved in low relief with two panels of lotus flowers, against a buff ground, the other painted with stylised tendrils, against a buff ground with shaded and graduated bands, 25.5cm & 24cm respectively **£150-250**



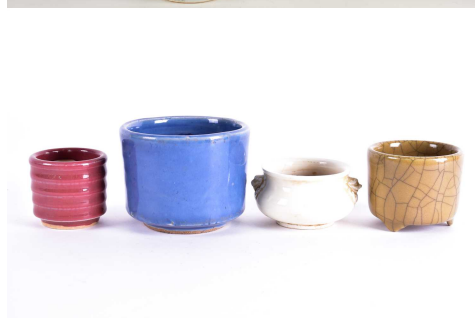
- 258 A large Japanese imari vase and cover, Edo period, 17th/18th century, painted with panels of chrysanthemum and paulownia heightened with gilding, 66cm **£200-300**



- 259 A pair of Chinese famille verte vases, Qing, 19th century, the square necks above rounded bodies, painted with panels of figures and birds on leafy branches, on a diaper and running floral and stippled ground, four character seal mark to base, 37cm **£1,500-2,000**



- 260 A Chinese blue monochrome censer, of cylindrical form in circular foot, 8.6cm high, 11.3cm diameter, a squat blanc de chine censer with lion mask handles, 5cm high, a Ge type censer, 6.7cm high, and a monochrome ribbed censer, 6cm high **£150-250**



## Asian Art, Thu, 4 November 2021 9:30

- 261 A Chinese famille verte vase and cover, Qing, 19th century, painted with two feng-huang amongst tree peony and geometric rockwork, between diaper and false gadroon borders, 40cm **£1,200-1,500**



- 262 A Chinese Jiao Tai stem bowl, Song dynasty or later, with deep sides, on an inverted tapering ribbed stem, 12.7cm dia, 10cm high; and a Tang style amber glaze marbled deep sided bowl, 11.9cm dia, 7cm high **£300-500**



- 263 A Chinese Jian ware 'Oil spot' bowl and vase, each with a thick black glaze suffused with variegated silvery spots, each on an unglazed circular foot, the bowl 19.5cm dia, 8cm high, the vase 11cm high **£200-300**



- 264 A Thai Neolithic Ban Chiang pottery vessel, the compressed body with a short everted rim and tall waisted stem on a spreading circular base, incised with geometric and scrolling lines picked out in red on a cream slip ground, 26.5cm high **£150-250**



- 265 A Chinese part biscuit porcelain figure of Shoulao, seated holding a manganese and yellow glazed ruyi sceptre, dressed in long robes, 21cm; and a porcelain figure of Budai, in typical seated pose holding a string of beads and a sack of treasures, his cheeks blushed and with painted eyes and lips, impressed mark for Zhu Mou Ji Zuo, 25cm **£200-300**



## Asian Art, Thu, 4 November 2021 9:30

- 266 A Chinese crackle ware vase, 20th century, with apple green ground beneath a brown oxide rim, 24cm **£200-300**



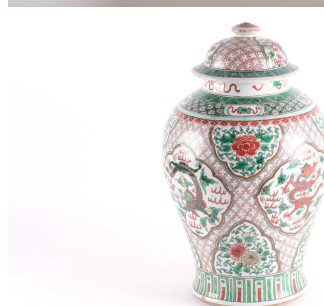
- 267 A Chinese blue and white vase, Ming, Wanli period, the shoulder painted with a ruyi head cloud collar above four large fish swimming amongst lotus flowers and other plants, above a band of pendant flower false gadroons, 19cm high, on carved rosewood stand  
The depiction of four large fish can be read as the pun rebus Qingbai Lianjie (pure & incorruptible), signifying a wish for scholarly success whilst maintaining high ethical standards. **£400-600**



- 268 A Chinese porcelain 'Sweet White or Tian Bai' bowl, Ming, with everted rim on a tall circular foot, painted Fu mark, 14.5cm dia, 6.5cm high **£500-800**



- 269 A Chinese famille verte vase and cover, Qing, 19th century, the neck and shoulder with auspicious symbols, above four shaped panels containing dragons amongst clouds and panels of peony and chrysanthemums, against a lozenge ground, between a ruyi band and false gadroons, 45 cm high (36 cm without cover). **£1,000-1,500**



- 270 A pair of Chinese rose pink glazed twin handled vases, Republic period, the slender neck with gilt rim and two raised bands, the handles formed as leaping fish, on an inverted baluster base with gilt foot rim, painted four character Qianlong seal mark, 12.5cm, in wood box **£800-1,200**





## Asian Art, Thu, 4 November 2021 9:30

- 271 A pair of Chinese blue & white deep sided bowls, Qing, 18th century, painted with floral scrolls and flowers, with brown oxide rim, on a circular base, 20.5cm & 21cm dia, 10cm - 10.2cm high **£400-600**



- 272 A pair of Chinese porcelain dragon saucer dishes, six character Guangxu mark and possibly of the period, the auubergine and green dragons opposing a single pearl amongst clouds, against a yellow ground with black concentric rings, one exterior with fruiting vines, the other with four cranes and clouds, on a circular foot, 12.9cm dia **£300-400**



- 273 A Chinese cylindrical flowering chrysanthemum vase, late Republic period, bearing signature for Wang Bu, three character painted seal mark, 13.5cm **£100-150**



- 274 A Canton enamel Famille Rose plate and six cups and saucers, 19th century, the plate painted with panels of figures, blossoming flowers, insects and birds, the cups and saucers with panels of blossoming flowers, insects and birds, all centred with a hawk upon a rock flanked by butterflies and green scroll ground, the plate 24.5cm dia, and a small ginger jar, Zhongguo Jingdezhen Zhi mark, 11.5cm hihg (Qty: 13) **£70-100**



- 275 A pair of Chinese famille rose rouleau vases, 20th century, with gilt rims and painted with lotus flowers and scrolling tendrils, with butterflies on a turquoise ground, with mask handles, above false gadroons, apocryphal Guangxu four character mark, 20cm **£400-600**



## Asian Art, Thu, 4 November 2021 9:30

- 276 A Chinese porcelain vase, Republic period or later, finely painted with three warriors of the Three Kingdoms, Guan Sheng, Wu Yong & Fan Rui, four character Hongxian Yu Zhi in gilt and red, 21.5cm **£250-350**



- 277 A near pair of Chinese blue & white containers and covers, Qing, Kangxi period, with simulated bamboo knops and handles, painted with a prunus and cracked ice ground, 16.5cm & 17.5cm **£1,000-1,500**



- 278 A Chinese polished Yixing teapot and cover, Qing, with an upright metal handle, with metal mounted knop, edges and tip of spout, impressed character mark to the base, 19.5cm **£300-500**



- 279 A pair of Chinese equestrian funerary figures, Ming Dynasty, one painted black, the other white, the riders with removable heads, one bearded whilst the other clean shaven, the dress and tiger striped saddle cloth picked out in black ink with contrasting details in yellow and red, on rectangular bases, 30cm wide, 34cm high  
Purchased from C C Lai, Toronto for \$4900 **£800-1,200**



- 280 A pair of Chinese porcelain reticulated lanterns, Qing, 19th century, the square section bodies with famille rose panels of the eight Taoist immortals, Baxian, between a circular neck and base, each painted with waves, 33.8cm high **£3,000-4,000**



## Asian Art, Thu, 4 November 2021 9:30

- 281 A quantity of Chinese famille rose saucers, early 20th century, painted to the centre with a peach, bordered by double shou symbols and flowers, some with engraved collectors/tally marks, a set of nine monochrome painted saucers painted with a peach surrounded by three bats, a double shou and fruits, a further two sets of three matching saucers, all with printed seal marks or painted eternal knot mark, 13cm - 16.5cm, (Qty: 28) **£80-120**



- 282 A Chinese porcelain bitong, late Qing early 20th century, painted with a couple in an interior before a mountainous landscape, red stamped Tongzhi seal mark, 12cm; an aubergine glazed moulded bitong, 20th century, moulded with figures in a mountainous landscape with buildings, boats and pine trees, applied wax Jian Ding, 11.5cm; and a early 19th century style yellow ground bitong, 20th century, with applied decoration of tree rats on fruiting vines in green, white and aubergine glazes, applied was Jian Ding, 11.7cm **£250-350**



- 283 A Chinese porcelain Famille rose panel, finely painted with an emperor seated in a rockwork throne, with warrior and attendant, seal marks for Wang Xiaotang but probably later, mounted in a hard wood frame, image 41cm x 26cm **£300-500**



- 284 A Chinese porcelain meiping graduation vase, a scroll band to the shoulder above a scholar holding a floral sprig and standing on the head of a dragon emerging from spuming waves, apocryphal four character Kangxi mark, 30cm **£100-150**



- 285 A pair of Chinese mallow flower shaped dishes, Yuan dynasty, each celadon glazed with six sectioned panels with scrolling tendrils, on short circular feet, 13.8cm dia; a deep sided fish bowl, the interior with two relief moulded fish within a floral border, Yuan or later, 15.2cm dia; and a celadon glazed cosmetic/wax pot and cover, Yuan or later, the cover with a relief moulded sprig of leaves within a gadrooned rim, 8cm dia **£300-500**



## Asian Art, Thu, 4 November 2021 9:30

- 286 A Chinese blue & white porcelain brush washer, late Qing/20th century, painted with a writhing dragon chasing pearl amongst clouds, six character Qianlong seal mark, 9.8cm dia, in wood box **£200-300**



- 287 A Chinese blue & white deep saucer dish, six character mark for Guangxu and possibly of the period, finely painted with pine, prunus, rockwork and lingzhi fungus, within two concentric rings the underside painted with two boys and a female attendant within a fenced garden, 17.8cm dia, with weighted wood stand **£500-700**



- 288 18th century Chinese European decorated porcelain, comprising an Anhua teapot, a Kangxi bowl and cover, a blue cell banded teapot and a baluster vase, the vase 31.5cm **£150-250**



- 289 A Chinese Cizhou type glazed bowl, possibly Yuan or later, with a white metal rim, the glaze with splashes of red and small dark and caramel coloured speckles throughout, on an unglazed foot, 12.7cm dia, 6cm high, on later wood stand **£600-800**



- 290 A pair of Chinese blue & white vases, Qing, 18th century, the cylindrical bodies with flaring rims, painted with watery landscapes with bat and scroll borders, on a floral sprigged ground, 27cm **£150-250**





## Asian Art, Thu, 4 November 2021 9:30

- 291 A Chinese porcelain tureen and cover, Republic period, the orange peel porcelain loosely painted with landscapes, red and black calligraphy, bears mark for Ren Huang Zhang, of rectangular form with re-entrant corners, the cover with pineapple finial, 23.5cm dia **£150-250**



- 292 A Chinese blue & white ginger jar, Qing, Qianlong period, painted with a continuous landscape of figures, buildings, trees and mountains, beneath a geometric band, two blue concentric rings to the underside, 22cm, with gilt wood stand **£400-600**



- 293 A Chinese Jizhou 'Leaf' bowl, Song dynasty or later, the interior with a dark glaze leading to a dark tan coloured leaf, the exterior glaze shaded from black to brown, on an unglazed foot, 10.5cm dia; a Jun Yao purple splash bowl, with deep rounded sides on a small circular foot, 9.7cm dia; a Jizhou bowl with tortoiseshell glaze, 9cm dia; and a small Jizhou bowl, the thick black glaze with brown speckles, 7.8cm dia **£300-500**



- 294 A Chinese celadon Ge glaze censer, Qing, 18th century or later, of squat circular form with two applied loop handles, on three short feet, approx 12.5cm dia, internal diameter 9.5cm, 6cm high excluding handles **£300-500**



- 295 A Chinese porcelain Wu Shang Pu teapot, Qing, late 19th century, of hexagonal form, painted with Liang Gong and Wu Ze Tian (Wu Zhao) from the Table of Peerless Heroes, the cover with a peach form knob, with interior pierced liner, on six short feet, painted red seal mark for Daoguang, 13cm high; a Famille rose hexagonal teapot, late 19th century, painted with the three star gods and attendants, red stamped Tongzhi seal mark, 14.5cm, a Chinese gourd shape teapot, with applied blossoming vines in blue, yellow and green against a green ground with aubergine handle, 10cm high; and a Cadogan type teapot modelled as a Buddhist temple lion, standing on its haunches against a lidded vase, 16.5cm **£400-600**



## Asian Art, Thu, 4 November 2021 9:30

- 296 A Chinese blue & white petal moulded bowl, Qing, Kangxi, finely painted throughout with sprigs of flowers on moulded sections, a lingzhi fungus to the underside within double concentric circles, applied label for Marchant, London, 15cm dia; together with two blue & white wine cups, one Kangxi and of octagonal form, the other painted with ruyi head fronds with six character Jiajing mark, **£250-350**



- 297 A Chinese monochrome bitong, Qing, the cylindrical body with a mustard yellow glaze throughout, 14cm high, 9.7cm dia, on carved blackwood stand **£150-250**



- 298 A Chinese blue, white and copper red seal paste box and cover, Qing or later, painted with figures before official buildings mounted with a Shou and a river gateway, the base with waves and rockwork, double blue concentric ring to the underside, 7.4cm dia **£100-150**



- 299 A Chinese blue & white lotus vase, Qing, painted with blossoming lotus flowers amongst tight scrolling tendrils, a double blue concentric circle to the underside, 24cm **£400-600**



- 300 Six Chinese blue and white rice jars, 19th century and later, each with double shou (double happiness) on stylised foliate grounds, 20.5cm - 23cm **£100-200**



## Asian Art, Thu, 4 November 2021 9:30

- 301 A pair of Chinese blue and white vases and covers, Qing, late 19th century, painted with the eight Taoist immortals above spuming waves, Baxian, the covers with Taoist auspicious items, apocryphal six character Kangxi marks, 42cm **£2,000-3,000**



- 302 A Chinese blue & white duck & lotus vase, Ming dynasty, Wanli, painted with pairs of ducks swimming between blossoming lotus, between floral sprigs and floral pendant gadroons, 17.4cm high, 20.2cm dia, on wood stand **£400-600**



- 303 A pair of Chinese famille rose sleeve vases, Republic period, 20th century, painted with cockerels and butterflies in a blossoming garden, between lotus flower and scrolling tendril borders, 29cm **£200-300**



- 304 Three Chinese Jian ware 'Hares Fur' tea bowls, Ming and later, each with deep rounded sides, the thick glaze terminating at each unglazed circular foot, 9.2cm - 10cm dia **£350-450**



- 305 A Chinese porcelain Zhadou, painted with forty butterflies heightened with gilding flying amongst eight double Shuangxi against a yellow ground, four character Tongzhi mark, 9cm high, 9.7cm dia **£500-700**



## Asian Art, Thu, 4 November 2021 9:30

- 306 A pair of Chinese blue and white vases and covers, Qing, late 19th century, the covers painted with young boys, the neck with bamboo leaves, the vases painted with an interior scene of a noble couple seated whilst entertained by musicians and attendants bringing food, above a band of auspicious flowers, 33cm **£2,500-3,500**



- 307 A pair of large Japanese pottery dragon vases, Meiji/Taisho period, the onion shaped bodies with a dark turquoise blue ground, and applied scaley gilt and red/brown dragon writhing around the neck amongst incised clouds, 93cm **£1,800-2,200**



- 308 A Chinese blue & white trefoil shaped dish, Ming, Wanli, with steep short sides, painted with a cricket upon a rock surrounded by insects and flowers, the rim painted with scrolling foliage, on three short mask face feet, 19cm diameter **£250-350**



- 309 A Chinese blue & white double phoenix dish, six character mark of Guangxu, painted with two phoenix representative of the Empresses Cixi & Ci'an, amongst clouds, within a double series of concentric blue rings, the exterior similarly decorated, 16.2cm dia **£200-300**



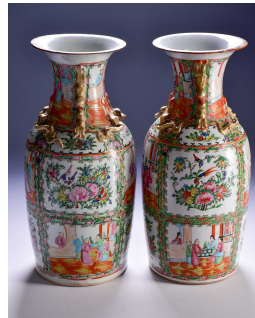
- 310 A small Yixing teapot, 20th century, of compressed form, the lid knob modelled as a branch with flowering sprig, the shoulder with incised characters, four character studio seal mark to the underside, 6.5cm high **£300-400**





## Asian Art, Thu, 4 November 2021 9:30

- 311 A pair of Canton enamel vases, Qing, 19th century, the flared rim above gilt shi-shi handles and chilong, painted with panels of figures, 45.2cm high **£400-600**



- 312 A pair of Chinese 'Romance of the Western Chamber' famille verte porcelain lanterns, late Qing, of swollen hexagonal form, with pierced panels with roundels depicting scenes from the story, to include Scholar Zhang's dream of marrying Yingying, on hexagonal stands with pierced flower head panels, 40cm **£3,000-4,000**



- 313 A Chinese coral ground vase, the shoulder with gilt ruyi and meandering key bands, above lotus flowers, bats with eternal knot pendants, baskets of auspicious fruits, above false gadroons, apocryphal Jiaqing seal mark, 23cm **£800-1,200**



- 314 A pair of Chinese celadon bottle vases, third quarter 20th century, with Ge type glaze, 36cm, with presentation boxes (Qty: 2) **£100-200**



- 315 A quantity of Chinese famille rose saucers, early 20th century, painted with a peach to the centre and bordered by double shou symbols and butterflies, assorted marks to include red stamped Tongzhi seal mark and painted eternal knot, 13cm - 16.5cm (Qty: 22) **£80-120**



## Asian Art, Thu, 4 November 2021 9:30

- 316 A pair of Chinese blue & white quintal bulb vases, Qing, 19th century, each with artichoke mouth, the bodies painted with dragons amongst peony and flowers, between ruyi head and false gadroon borders, 24.5cm high  
One aperture with a chip to the rim and both with some fritting.  
**£2,000-3,000**



- 317 A pair of Chinese Famille Rose vases, finely painted with blossoming Carnations, Convolvulus, Peony, Prunus and Iris, against a pink graviata ground, the neck with a thin swollen band, with gilt rims, 46.5cm **£400-600**



- 318 Chinese cloisonne vases, 20th century, a blue and white jar and cover with character Kangxi marks, and a pair of Japanese celadon ground porcelain plates with relief moulded floral decoration, four character marks, tallest vase 23cm, pair of vases 10.7cm, cloisonne ginger jar 15.5cm, jar & cover 12cm, plates 18cm dia **£50-80**



- 319 A large Japanese Shigaraki grain jar, Tsubo, early Edo period, the shoulder with incised 'well curb', with natural ash glaze, HEIGHT???? **£300-500**



- 320 A Chinese double gourd water dropper, 20th century, an applied bat to the circular rim, the yellow & green glazzed body with applied leaves and tendrils, on three ball feet, 14.5cm **£150-250**



## Asian Art, Thu, 4 November 2021 9:30

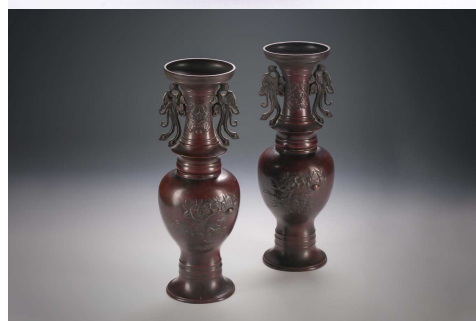
- 321 A Chinese bronze censer, late Qing, the openwork cover with a long eared chilong amongst meandering foliage, the censer with chilong handles and cast with a scholar beneath pine trees between key bands, on three short legs with floral decoration, apocryphal Xuande mark, 21cm high **£200-300**



- 322 A Chinese bronze censer, Qing, 19th century, with loop handles above a slightly compressed body on three short feet, poorly cast Xuande mark, 635g, internal diameter 10.5cm, 6.5cm high excluding handles, **£150-250**



- 323 A pair of Japanese bronze vases, Meiji, circa 1900, with phoenix handles, the bodies relief cast with a bird on a blossoming branch, 36cm **£100-150**



- 324 A Chinese bronze Boshanlu 'Hill' censer, Han dynasty, the openwork cover cast as mountains, on a stem cup base, 10cm; and a Han dynasty style bronze spearhead, with cast median ridge, the socket with archaic style decoration, 23.5cm **£200-300**



- 325 A Chinese bronze figure of Wenshu (Manjusri), Qing, seated in lalitasana upon a Buddhistic lion, decorated with gilt and silvered adornments, the caparisoned beast in fierce snarling pose, with tightly cast curling mane and tail, 40cm high, approx 35cm wide **£600-800**



## Asian Art, Thu, 4 November 2021 9:30

- 326 A Japanese parcel gilt bronze Archer, Meiji period, kneeling with one leg extended and his bow fully drawn, he wears armour beneath a jinbaori elaborated gilding with Mon, wheels and decorative motifs, with removable wakizashi, the eyes in silver and shakudo wash, signed Gyoko in a gilt tablet, 38cm, on wood stand, **£4,000-5,000**



- 327 A Tibetan bronze Stupa, 13th/14th century, the lotus bud above a petal moulded and beaded parasol on an inverted stepped and beaded tier, the square shaped harmika above a bell shaped body on a double lotus and beaded base, 19.5cm **£1,000-1,500**



- 328 A Nogawa bronze table screen, Meiji period, the four panel in mixed metal and shakudo, depicting figures running from lightning and rain, a leafy Maple branch, two Bijin with a lantern and a leafy bamboo pole, all above further panels of butterflies, the reverse with a watery landscape of Torii gate, Mount Fuji boats and buildings, one panel signed front & rear, 12.8cm high x 23cm fully open **£800-1,200**



- 329 A near pair of Japanese bronze censers, Meiji/Taisho period, the pierced covers with playful temple lions with pups and balls on a cloud base, the body relief cast with panels of birds, supported by a dragon clutching a pearl, on a circular base, each with removable inner liner with four short feet, signed, 15cm & 15.5cm **£200-300**



- 330 A Chinese bronze elephant seal, early Qing, 17th/18th century, the caparisoned beast standing on all fours on a square base, a six character seal mark to the underside, the seal 5.5cm x 5.4cm, 5.5cm high **£300-500**





## Asian Art, Thu, 4 November 2021 9:30

- 331 An East Tibetan (Chamdo) Iron Beer - Chhaang, 18th/19th century, overlaid in silver and gold metals with a central indented roundel decorated with a dragon framed by Buddhist symbols, eternal knot, conch shell, peony and two fish, within silver foliate scrolls, the brass handle formed as a Himalayan dragon, the hexagonal brass spout with makara terminal, 38cm high **£300-500**



- 332 A Chinese bronze censer, Qing, 18th century, of compressed circular cushion form, with loop handles, four character Jia Chang Zhen Bo mark, 1315.5g, interior diameter 11cm, 16cm dia overall excluding handles **£1,000-1,500**



- 333 An early Chinese bronze sword, possibly Han dynasty, with a shallow central fullered blade, the handle with traces of decoration, 62.5cm, in fitted presentation box **£200-3,000**



- 334 A Chinese bronze censer and Buddhist lion, the censer with sprung handles, on three short feet, cast apocryphal Xuande mark, 173g, 6.5cm dia, the lion on raised rectangular platform, 10.3cm high **£200-300**



- 335 A Chinese bronze censer, Qing, with Buddhist lion finial flanked by shaped and pierced handles, the censer with a band of ruyi head above the lotus panel bodies, the four legs with mythical lion masks, 20.7cm **£100-150**



## Asian Art, Thu, 4 November 2021 9:30

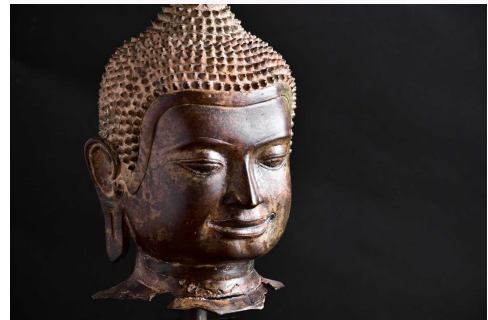
- 336 A large Javanese carved wood statue of a standing mother clutching her child to her chest, 20th century, carved from a single tree trunk, 212cm high **£500-800**



- 337 A Chinese bronze censer, Qing, 18th century, of slightly swollen form with stylised lion mask handles, apocryphal Xuande marks, 389g, the diameter of top 9.3cm, 7cm high **£500-700**



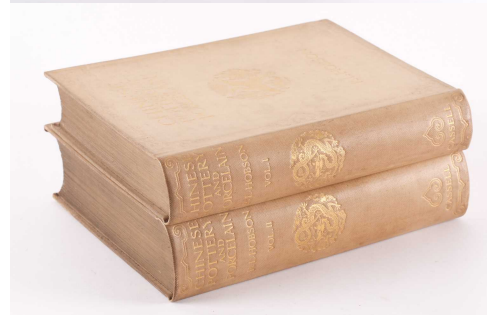
- 338 A Thai bronze Buddha's head, 20th century, with flaming ushnisha, on a black marble base, 39cm **£100-150**



- 339 A Chinese Canton enamel Gu form vase, Qing, 18th/19th century, painted with panels of European figures, landscapes, flowers, birds, a tiger and a crane, between cell borders, 27cm; and a Chinese bronze censer, 20th century, cast with taotie masks, on four archaic style legs, 19cm **£100-150**



- 340 Hobson, R.L, Chinese Pottery & Porcelain, volumes 1 & 2. publ: Cassell & Company, Ltd, 1915, cream cloth boards with gilt lettering **£200-300**



## Asian Art, Thu, 4 November 2021 9:30

- 341 Farrer, Anne: Wu Guangzhong - a Twentieth Century Chinese Painter, British Museum Press, Publ:1992, Cahill, James: Painting at the Shore - Chinese painting of the early and middle Ming Dynasty, 1368 - 1580, Publ: John Weatherhill Inc, 1978, Two Volumes National Museum of History - The Republic of China, Huang Chun-Pi's Paintings & The Paintings of Chao Shao-An; Masterworks of the Ming & Qing Paintings from the Forbidden City, International Arts Council 1988; The Autumn Colors on the Ch'lao and Hua Mountains - A Landscape by Chao Meng-Fu, Publ: Artibus Asiae 1965; Courtois, Michel; Chinese Painting, Publ: Heron Books 1970; two hardback Chinese text art reference books and a further 24 principally Chinese text art reference softback booklets **£150-250**



- 342 Higo Metalworking Encyclopedia, publ:1964, numerous black & white and colour illustrations, text in Japanese and English, hardback with outer slip case **£300-400**



- 343 An Indo Persian rock crystal and white metal pendant, with crown shape suspension ring bearing indistinct marks. **£200-300**



- 344 An Indo Persian red hardstone pendant in silver metal mount, of rounded octagonal shape, engraved with calligraphy, 5.5cm diameter. **£150-250**



- 345 A large Indo Persian green stone pendant in white metal mount, the square stone engraved with three lines of calligraphy, encased in brass, white metal suspension loop. **£300-400**



## Asian Art, Thu, 4 November 2021 9:30

- 346 A large Indo Persian rock crystal pendant in white metal mount, finely engraved with calligraphy, with petal shaped suspension mount. **£200-300**



- 347 A base metal Indo Persian gentleman's ring, engraved with calligraphic characters **£150-250**



- 348 An Indo Persian bean shape jade pendant, engraved with a single calligraphic character, 4.9cm. **£100-200**



- 349 An Indo Persian leaf shaped pendant, finely engraved with calligraphy, 5cm **£200-300**



- 350 An Indo Persian red hardstone octagonal pendant in silver metal mount, **£50-80**





## Asian Art, Thu, 4 November 2021 9:30

- 351 A probably Indian/Iranian bracelet section mounted with three oval panels within gilt metal mounts the two agate and one rock crystal inscribed with the probably devotional verse in Arabic calligraphy. 15 cm long x 3.3 cm **£300-400**



- 352 An Indo Persian jade pendant, of rectangular form with rounded ends, engraved with four lines of calligraphy, pierced mount for suspension. **£100-200**



- 353 An Indo Persian white metal and jade pendant, the jaded engraved with two lines of calligraphy, within a white metal mount with shaped suspension ring. **£150-250**



- 354 An Eastern white metal gentleman's dress ring with intaglio carved Islamic calligraphy rectangular carnelian(?) panel. **£100-150**



- 355 An Indo Persian glass bullseye ring **£50-80**



## Asian Art, Thu, 4 November 2021 9:30

- 356 A modern Indo/Persian gilded steel suspension hook, in the 19th century style, the hook modelled as a swans head on either side of a central square with simple foliate decoration, 6cm **£150-200**



- 357 An Eastern white metal gentleman's ring set with a canted rectangular green hardstone panel intaglio cut with a probably devotional verse in Arabic calligraphy, bearing a stamped mark to the interior surface of the shank. 2.2 cm x 1.9 cm the panel **£200-300**



- 358 An Indo Persian rock crystal figure of a bird, 3.6cm **£100-150**



- 359 An Eastern niello decorated (925) silver and turquoise gentleman's ring set with a single rectangular cushion form stone. **£100-200**



- 360 An Indo Persian carnelian-coloured glass beaded prayer necklace, with shaped rounded beads. **£200-300**



## Asian Art, Thu, 4 November 2021 9:30

- 361 A Safavid carved dark green jade pendant in silver metal mount, of oval form, engraved with calligraphy, with silver metal suspension mount. **£200-300**



- 362 An Indo Persian white metal and orange stone ring, the circular stone engraved with calligraphy. **£200-300**



- 363 An Eastern 18ct yellow gold and carved jadeite seated Buddha pendant. Marked 18ct to the loop suspension. 3.5 cm long x 1.5 cm wide **£300-400**



- 364 An Indo Persian white metal and blue glass gentleman's ring, set with a drilled glass bead, stylised claws and shank. **£60-80**



- 365 An Indo Persian white metal and hardstone ring, set with a pale orange onyx hardstone with engraved calligraphy. **£100-200**



## Asian Art, Thu, 4 November 2021 9:30

- 366 A probably Persian white metal dress ring set with a circular lapis lazuli panel engraved with Islamic calligraphy. 2.2 cm diameter **£400-500**



- 367 An Indo Persian hardstone pendant in yellow metal mount, the stone finely engraved with calligraphy, the suspension loop marked 750. (untested) **£300-400**



- 368 An Eastern white metal gentleman's ring set with oval cut red stone, mounted with pierced triangular claw settings. **£100-150**



- 369 An Indo Persian dark red gem pendant, engraved with calligraphy, in white metal mount. **£300-400**



- 370 A heavy white metal gentleman's ring set with a claw set oval cut emerald within a border of small diamonds in a gilt metal setting (likely Indian), the shoulders with pierced and shaped inset gold panels, bearing an applied entablature to the interior. **£800-1,200**





## Asian Art, Thu, 4 November 2021 9:30

- 371 An Indo Persian hardstone intaglio seal, the square plaque with engraved decoration. **£150-250**



- 372 A Persian gold coloured metal gentleman's ring, in the early Qajar style, engraved with calligraphy. **£150-250**



- 373 An Indo Persian hardstone pendant in silver metal mount, engraved with lines of calligraphy, with two leaf shape suspension mounts, stone 4.5cm diameter. **£400-600**



- 374 An Indian yellow metal gentleman's signet ring (unmarked, likely high carat gold), set with an oval banded agate panel, the carved stylised mount with curved shank. **£600-800**



- 375 A large Persian silver gentleman's ring, set with a turquoise coloured stone, a short inscription on the shank. **£400-600**



## Asian Art, Thu, 4 November 2021 9:30

- 376 A quantity of Chinese carved hardwood vase and plate stands, 19th - 20th century, comprising 42 vase stands to include to gilt metal examples and 8 plate stands, the vase stands 5cm - 24cm diameter, **£200-300**



- 377 A Chinese embroidered silk panel, 20th century, worked as a Fenghuang with a lingzhi in her beak, standing on a blossoming tree peony, 45.5cm x 67cm' and a panel of four polished hardstones, each with painted calligraphy, 115cm x 24cm overall **£50-80**



- 378 A Chinese carved ivory parasol handle, early 20th century, the terminal carved as a dragons head, the tapering stem carved with dragons, pearls, birds, butterflies amongst clouds, 35cm, together with a Japanese carved marine ivory figure of a man with two boys, Meiji period, the man holding a kite with one boy on his shoulder, the other standing holding a drum, incised red tablet, 18.5cm **£70-100**



- 379 A Chinese provincial wood rice bucket, with metal mounts, 38cm wide and a Chinese calligraphic printing roller block, the block 25cm wide **£50-80**



- 380 Four Chinese carved hardwood stands, early 20th century, and a pair of Japanese lacquered vase stands, Meiji period, with metal mounts, with gilt meandering vine decoration, a mon to each leg, the largest stand 54.5cm long 34cm deep, 11cm high, beaded edge stand 45.5cm wide, 28cm deep, 7.5cm high, the pair of hardwood stands with recessed centre, 14cm square and 5cm high, the Japanese stands 15.5cm wide, 7.5cm high **£100-150**



## Asian Art, Thu, 4 November 2021 9:30

- 381 A Chinese cloisonne candlestick modelled as a Crane, Qing, late 19th century, the sconce attached to a scrolling stem held within its beak, 32cm **£500-700**



- 382 A Chinese moulded and carved tortoiseshell snuff box, Qing, 19th century, the cover carved with a figure welcoming three travellers before a fenced garden with buildings and pine trees, within a meandering key border with flower heads at each corner, the concave base carved with dragons opposing a pearl, 6.6cm wide, 4.4cm deep, **£200-300**



- 383 Three Japanese steel Yanone and two Karimata, Edo, one yanone with pierced characters in the head, all but the wide head yanone signed, each with square tapering shaft, 22cm - 46cm **£200-300**



- 384 Five Japanese netsukes, Meiji/Taisho period, four ivory comprising a Kobe figure playing shamisen, a Noh actor with rotating faces, a man & boy by a screen a young boy verso and a deity, and a stag horn netsuke of a mask maker, all but the stag horn signed, tallest 5cm **£150-250**



- 385 A Chinese embroidered silk dragon formal court robe, Chi-Fu, late Qing, the gilt thread writhing dragons surrounded by Buddhist symbols, bats and lingzhi shape clouds, above turbulent waves with gilt thread dragon carp and further Buddhist symbols, with lishui stripes, 118cm long **£800-1,200**



## Asian Art, Thu, 4 November 2021 9:30

- 386 Ten Chinese embroidered silk panels, 20th century, embroidered with figures, birds, butterflies, prunus, bamboo and rockwork, each with brocaded border, mounted and framed, images 34cm x 14cm - 51cm x 16cm **£100-150**



- 387 Two Chinese jade belt hooks, Qing, the dragon head terminal facing a chilong, the stone a pale green/white colour throughout, 8.7cm & 9.2cm **£300-500**



- 388 A Chinese Chaozhou panel, 20th century carved with the eighteen Arhats, against a background of pine trees, a dragon, a tiger and clouds, 27.4cm x 39.5cm **£300-400**



- 389 Two Chinese jade belt hooks, Qing, each with dragon head terminal facing a chilong, the stone a pale green colour throughout, 9cm & 9.5cm **£300-500**



- 390 A Chinese hardwood bitong, Qing, carved as a scholars rock, 14.7cm, a white metal mounted ladle, with copper and white metal lined bowl, the handle carved as a gnarled branch, 19.5cm, a shaft of Zitan wood, 24cm and a carved hardwood furniture bracket, **£200-300**





## Asian Art, Thu, 4 November 2021 9:30

- 391 A Chinese export lacquer and mother of pearl games box, Qing, 19th century, the box for chess and backgammon, with two part sets of ivory chess pieces and 28 natural and red stained carved ivory draughts/backgammon counters, the ivory dice and tumbler, the box 55.8cm x 56cm **£100-150**



- 392 A Chinese carved wood articulated doll, Qing, modelled seated wearing a removable hat, with traces of pigment throughout, 32cm (*Stand not included*) **£100-150**



- 393 A pair of Chinese Chaozhou gilt wood carvings, late Qing, 19th/20th century, intricately carved with warriors on foot and horseback, a group of five warlords watching from beneath a pagoda, 63cm x 40.4cm **£200-300**



- 394 A pair of Balinese carved and painted wood statues, mid 20th century, formed as elaborately carved smiling female figures, each wearing a different crown, 207cm high, 43cm wide, 30cm deep  
These were attached to each side of a house entrance to welcome guests. **£400-600**



- 395 A Chinese banded amethyst censer, Qing, with ruyi head handles, the rim with incised key fret band, on three short scroll legs, 10cm dia excluding handles, on wood stand **£100-150**



## Asian Art, Thu, 4 November 2021 9:30

- 396 A large Burmese puppet, wearing traditional ceremonial dress, with painted wood head and hands, 73cm **£80-120**



- 397 A pair of Chinese embroidered silk dragon panels, Ming, each dragon chasing a flaming pearl amongst clouds and above waves and rocks, 48cm x 68cm & 36cm x 71cm **£400-600**



- 398 A Chinese green jade rope twist ring, the stone a uniform colour, 3.3cm dia, internal diameter 2.2cm **£200-300**



- 399 Three Chinese jade seals, a small jade carving of a fish above a pierced basket, a red agate peony pendant, a butterscotch amber pendant and four soapstone seals, one with wood stand, tallest 5.5cm **£250-350**



- 400 A Chinese archaic beast jade pendant, with incised decoration, the stone a uniform green with a touch of russet at the tail, 8cm **£80-120**



## Asian Art, Thu, 4 November 2021 9:30

- 401 Three Chinese lacquered tin lac burgaute boxes, late 19th - early 20th century, the larger boxes decorated with a cockerel and hen amongst peony, the other with a large gated dwelling, the smaller box with a gilt lacquered landscape, 13.7cm x 7.6cm, 13cm x 7.8cm & 7.4cm x 4.8cm **£100-150**



- 402 A Chinese carved soapstone Bixie seal, Qing, possibly 18th century, on a square base, the seal formed of four characters, the seal 3.8 cm x 3.8 cm, 3.5 cm high. **£100-150**



- 403 A Chinese chopstick & knife set, with hongmu haft and scabbard, the white metal mounts cast with dragons, the knife 24.5cm, 27cm overall **£150-250**



- 404 A Chinese jade pebble (touching stone), Qing, inscribed with a poem, the stone fitting neatly in the hand and of a uniform green with russet patches, 8.5cm **£400-600**



- 405 A Chinese carved jadeite figure of Guanyin, 20th century, modelled standing holding a fish in each hand, on wood base, 27.8cm overall **£200-300**



## Asian Art, Thu, 4 November 2021 9:30

- 406 A Chinese Hongshan style carved stone face mask pendant, 5.4cm x 4.6cm **£200-300**



- 407 Three Chinese embroidered silk panels, early 20th century, the largest worked with a figure on a boat before a seven tiered pagoda and buildings beneath trees and the sun, within a diapered border, overall 79cm x 118cm; a lotus flower panel and a blossoming peony panel, both within outer borders, overall 59cm x 78cm & 76cm x 106cm respectively (Qty: 3) **£100-150**



- 408 Two Chinese cast brass coins, marked for Tian Qi 10 cash, 46mm dia, and for Xianfeng 100 cash, 49mm dia **£100-150**



- 409 Japanese ivory netsuke and okimono, Meiji period, to include a pair of spaniels, signed Masa, a Mastiff standing on bamboo poles, signed, an okimono of a pumpkin and a standing horse, the latter signed, and a moulded resin figure of a rat on a knotted hank of rope, tallest 5cm **£200-300**



- 410 A set of three Chinese kesi embroidered panels, Qing, late 19th century, depicting hunters on horseback and foot, within a mountainous landscape, 99cm x 25.5cm **£300-500**





## Asian Art, Thu, 4 November 2021 9:30

- 411 A Japanese porcelain headed Musha doll, Meiji period, late 19th century, depicting the Empress Jingukogo in traditional dress, 61cm,  
Purchased at Muzutani gallery, Kyoto, 17th July 1995, \$6600  
**£600-800**



- 412 A Chinese jadeite seal, Qing, of rectangular form, the top with a single chamfered corner, the stone a flocculated green, signed, the matrix carved with two long characters, 5.6cm  
**£400-600**



- 413 A Chinese kesi panel, Ming dynasty, worked with silver metal and coloured threads with two cranes flying towards a central shou, 29cm x 95cm overall **£150-250**



- 414 A number of Chinese coins, various dates and grades, five painted wood prayer boards and two carved bamboo wrist rests, all within a carved wood box **£150-200**



- 415 A pair of Chinese carved wood temple lions, Qing, each carved with a paw upon a ball, traces of pigment and gilding throughout, standing on drum form bases, 55cm **£400-600**



## Asian Art, Thu, 4 November 2021 9:30

- 416 A Chinese export black and gold lacquer games box, Qing, early 19th century, the interior retaining three boxes and covers, each with CR monogram, ten small trays, four of which decorated with the Ace, King, Queen & Jack of Diamonds, the others with leaves against a trellis ground, a quantity of mother of pearl gaming counters each engraved with foliate sprigs flanking a CR monogram and verso an oriental figure and two full sets of De La Rue playing cards, 34 cm wide, 8cm high, 27.7cm deep **£200-300**



- 417 Two Chinese hardwood vase stands and a hardwood hanging jade stand, 20th century, 13.5cm high x 22cm dia, 19.5cm high x 20cm dia & 30cm x 23.5cm **£150-250**



- 418 A Chinese jade seal, of cylindrical form surmounted by a recumbent horse, the side inscribed with nine characters, the stone a uniform colour throughout, 3,5cm high **£400-600**



- 419 A pair of Chinese gilt cast metal Taotie furniture mounts, with rear rectangular appendage, 6.5cm wide **£100-150**



- 420 A Chinese cinnabar lacquer peach shape box, late Qing - early 20th century, carved as Lu Dongbin standing on a bed of leaves crossing the sea, an attendant offering him a double gourd, on a turbulent sea ground within a frame of bats, the sides and base with a floral cell ground, approximately 13.3cm wide, 9cm high **£200-300**



## Asian Art, Thu, 4 November 2021 9:30

- 421 A Chinese agate vase and cover, 20th century, with captive rings within scroll handles, the body carved with panels of lotus flowers and fronds, 14cm **£150-250**



- 422 Four Japanese ivory netsukes, Meiji period, to include a standing horse, two lychee and a fly on square dish, a figure seated on a large sack a figure escaping opposite, and a stained group of a bird on a fruiting branch, all but the latter signed, tallest 5.1cm **£200-300**



- 423 A Chinese lac burgaute box, late Qing, the cover inlaid with a mountainous landscape, the interior with five lidded boxes, 29cm wide, a Chinese lac burgaute sewing box, late Qing, the cover inlaid with a dwelling on stilts, the interior vacant, on four cast meal lion paw feet, 25.5cm wide; and a Japanese lacquered scroll box, Meiji period, inlaid with a cockerel and hen before flowers, 34.5cm long **£100-150**



- 424 Two Chinese embroidered panels, Ming or later, one worked with two dragons and flaming pearl above rocks & waves against a yellow ground, 25.5cm x 64cm; the other with a dragon and Buddhist symbols against a blue ground, 32cm x 42cm **£400-600**



- 425 A Chinese lacquered figure of Li Tieguai, with printed mark for Niong Hing, Foochow, another lacquered wood carved figure carrying a fish and basket, 23.5cm & 21.5cm respectively, twelve Chinese carved wood vase stands and a stand for an ivory doctors model, stands interior diameters, 5.5cm - 20.5cm **£70-100**



## Asian Art, Thu, 4 November 2021 9:30

- 426 Six Japanese Yanone, Edo period, the heads with pierced decoration to include a single sakura for the Sada-uji family, a double sakura for the Matamasa family, the others with a yanagi-ba, five with square tapering shafts, one with a round tapering shaft, all signed to either the head or shaft, 23.5cm - 34cm **£200-300**



- 427 Two Japanese porcelain headed Musha Dolls, Meiji period, one depicting the Empress' Samurai servant holding the Empress' child, the other as a Samurai warrior, each 33cm Purchased at the Muzutani Gallery, Kyoto, 17th July 1995, for \$6666 **£1,000-1,500**



- 428 A Pair of Japanese lacquer sake bowls, Taisho period, each painted with a Crane in flight against a gilt ground, 6.6cm diameter **£50-70**



- 429 A Chinese jade Han style pendant, of inverted tapering form, carved with Taotie style masks, the colour almost uniform throughout with a cloudy white to dark inclusion, 3.7cm **£400-600**



- 430 A Chinese cinnabar lacquer peach shaped box, late Qing - early 20th century, the cover carved with a deity holding a sprig of flowers and an attendant holding a lingzhi, both beneath a pine tree before mountains, on a cell, linear and meandering ground, within a border of bats, on a flower head cell ground, 13.3cm wide, 9.5cm high **£200-300**





## Asian Art, Thu, 4 November 2021 9:30

- 431 Two Chinese jade belt hooks, Qing, each with dragon head terminal facing a chilong, the stone a pale green/white colour throughout, 8.5cm & 9cm **£300-500**



- 432 Five Japanese ivory netsukes, Meiji/Taisho period, to include an octopus, a standing horse, two playful pups, an ape with peach, its offspring clambering on its back, and a chick emerging from an egg, all signed, tallest 5cm. **£150-250**



- 433 A Balinese pumice stone figure of a goddess, the lower part of her face painted white, wearing an elaborate headdress and holding a vessel, 85cm **£200-300**



- 434 A Chinese jade vase and cover, Qing, the cover with chilong knop, the vase carved in relief with two dragons and a flaming pearl amongst lingzhi style clouds, the stone a uniform mottled colour throughout, 17.3cm high, **£800-1,200**



- 435 A pair of Japanese lacquered wood vases, Meiji period, inlaid with mother of pearl and ivory, with cranes in flight or by a willow tree, surrounded by blossoming flowers, against a brushed lacquered ground, with interior tin liners, raised on shaped stands with four scroll feet, 60cm overall **£2,000-3,000**



## Asian Art, Thu, 4 November 2021 9:30

- 436 A near pair of Chinese embroidered silk sleeve panels, early 20th century, depicting females within a garden surrounding with rockwork and plants, image 51.5cm x 22cm & 52.5cm x 19.5cm; an early 20th century hardstone panel of two scholars seated beneath a pagoda and pine tree, overall 71cm x 21.5cm; and a 19th century Japanese woodblock print, oban, **£100-150**



- 437 A Chinese carved wood group of two young girls, Republic period, 15.5cm **£150-200**



- 438 A Chinese export silver trophy cup by Wang Hing, Qing, late 19th century, the bowl embossed with a writhing dragon and pearl, on three simulated bamboo supports with leafy terminals, on a circular base, struck marks, 175.3g, 16cm **£600-800**



- 439 A 19th century probably Armenian/Ottoman rectangular hinge lidded box with inset polished agate panels within borders of scrolling flowers. 9.1 cm long x 5.4 cm wide 2.8 cm deep. Together with an Armenian white metal scabbard mount with Cyrillic and Armenian inscription. **£150-200**



- 440 A set of six Chinese silver small tumblers, early 20th century, with planished decoration, struck marks to the base, 117g, 4.5cm high **£100-150**



## Asian Art, Thu, 4 November 2021 9:30

- 441 A contemporary Japanese small silver jug, the s curved handle wrapped in bamboo, the planished body engraved towards the base with tumbling water droplets, 10.5cm **£70-100**

